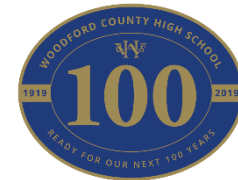




Woodford County High School for Girls

Weekly Bulletin

Issue No. 318 Tuesday 3rd December 2019



CARS ON CHARTER ROAD AND ELSEWHERE

In the 8th October bulletin we wrote about the problems caused by the behaviour of a small number of parents dropping off and picking up students in their cars. We unfortunately had to issue a similar message in the 16th November bulletin.

Last Thursday I was mortified to receive a phone call from a member of the public who complained of being sworn at repeatedly by a parent when he challenged them for parking on double yellow lines on The Charter Road. This is completely unacceptable. It brings the school into disrepute and is something that nobody – least of all any of the students present – should have to witness.

There is plenty of parking on The Charter Road and further down on Nesta Road. It is not necessary for anyone to park on double yellow lines or across driveways – students will simply have to walk a little farther to be collected. If you cannot safely drop or pick up your daughter on The Charter Road, parking is available at Sir James Hawkey Hall around the corner on The Terrace.

As we wrote in our previous communications, we appreciate traffic can be very busy at the start and end of the school day, but **for the safety of all students, staff, parents and local residents, parents MUST park safely and considerately in marked bays or where parking restrictions otherwise allow.**

C. Jenkins, Deputy Headteacher

LOST PROPERTY

Any items not claimed before the end of term will be given to charities or otherwise disposed of.

Items we currently hold include:

9 pairs glasses (1 with case)

7 sets of keys

4 watches

A FitBit

A pink and green pencil case

A grey, hexagonal purse

A pair of headphones

A purse with a 'K' on it containing an Oyster card

Various items of jewellery - earrings, a brooch, bracelets, necklaces, rings

Various of items clothing – coats, blazers, jumpers, shirts, skirts, PE kits

Please check if your daughter has lost anything and tell her to come to the Main School Office to claim it.

Woodford County High School for Girls



CAKE SALE MONDAY

9th DECEMBER 2019

Please can cake (no nuts in accordance with School policy) donations, made by parents/carers/girls, be left in the MAIN DINING HALL before morning registration on Monday 9th December 2019. Thank you.

BREAK TIME IN
THE DINING HALL



50p - £1 per cake

To raise money for Parents and Friends Association for equipment.

Woodford and Ilford County Christmas Disco 2019

Wednesday 11th December

Years 7 & 8

6-8pm School Hall

Woodford County High School

Tickets Event Only

£7.50 including a FREE glow stick

Pay via ParentPay by 5th December

Woodford County High School for Girls

CHRISTMAS LUNCH

18TH & 19TH DECEMBER 2019

TICKETS ON SALE FROM 2ND TO 11TH DECEMBER £3.00 EACH

HALAL/NON HALAL/ VEGETARIAN OPTIONS AVAILABLE.

GET YOUR TICKETS FROM THE DINING HALL AT BREAKFAST OR LUNCHTIME.

TICKETS ARE NOT AVAILABLE THROUGH PARENTPAY, SO PLEASE MAKE SURE
YOU HAVE ENOUGH MONEY IN YOUR ACCOUNT.

PLEASE SEE POSTERS AROUND THE SCHOOL FOR MENU OPTIONS.

THANK YOU.



Woodford County High School for Girls

Extracurricular Music Tuition - Redbridge Music Service



There is currently a place
available for
Tuesday **piano** lessons

There is currently a place
available for
Wednesday **drum** lessons

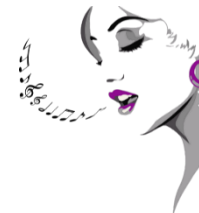


There is currently a place
available for
Thursday **violin** lessons



If you are interested please email
enquiries@woodford.redbridge.sch.uk

January After School Clubs 2020



*We still have a few places available in January's after
school clubs:*

Basic cooking 2 = 8

Dance = 6

Calligraphy = 5

Cakes & Cookies = 3

Self-defence = 12

Henna = 5

Skincare = 7

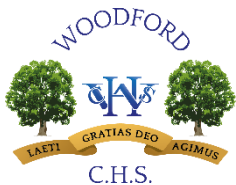
Dance = 3

Musical theatre = 8

Intermediate cooking = 2

*Please go to ParentPay to secure your daughter's place.
Thank you*





Woodford County High School for Girls



Race to the Line Sponsorship

Dear parent/guardian

As part of our promotion of STEM, for the last two years Woodford has very successfully taken part in ***Race to the Line***, a cross curricular project with D&T and Science which allowed Year 7 to design and make rocket powered cars and race them in a national competition. The cost of our participation has previously been covered by sponsorship sought by the race organisers (The Learning Partnership); this year they are having trouble finding us a sponsor, and have asked that we help in trying to secure one by contacting those connected to the school to ask if anyone has contacts in companies that may be willing to provide the sponsorship. A flyer provided by The Learning Partnership is attached with this bulletin, which outlines the benefits of sponsorship for the company and the school. We would be grateful if you would pass this on if you have links with a company that might recognise the benefit in sponsoring the active participation of girls in STEM.

The cost of our participation is £750 + VAT. This covers the cost of all the materials required to make and race the cars. The potential benefits to sponsoring companies (and of course those to students) are outlined on the flyer. Mrs Peters will be willing to supply any further information, as needed (petersj@woodford.redbridge.sch.uk)

Mrs Peters

Morgan Stanley Pre-University Programmes

STEP IN, STEP UP PROGRAMME FOR YEAR 12 & 13 FEMALE STUDENTS

An introductory 2-day programme designed for female students in Year 12 and 13, consisting of divisional overviews, case studies, panel sessions, a building tour and interactive workshops. Participants will also have the opportunity to work as a team, develop their presentation skills and network with employees at all stages of their careers.

Dates: 18th to 19th February 2020
(Deadline for applications 11th January 2020)

28th to 29th July 2020
(Deadline for applications 12th January 2020)

STEP IN, STEP UP TECHNOLOGY PROGRAMME FOR YEAR 12 & 13 FEMALE STUDENTS

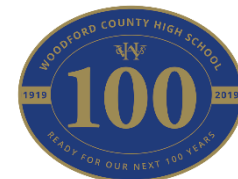
An introductory 1-day programme designed for female students in Year 12 and 13, interested in how the field of technology plays a pivotal role in investment banking. The programme will give an insight specifically into the Technology Division and will include interactive sessions and skill building sessions at Morgan Stanley's London Offices.

31st July 2020 (Applications open 12th January 2020)

How to Apply: To apply for these events and to find out more about Morgan Stanley, please visit: morganstanley.com/campus and search for our pre-university opportunities.



Woodford County High School for Girls



Registered Charity No (1103422)

Indoor Boot Sale

(Raising funds for the school)

SUNDAY 9.30am -12pm

13 October 2019
17 November 2019
8 December 2019
19 January 2020
16 February 2020
15 March 2020

at

Woodford County High School

High Road, Woodford Green, Essex IG8 9LA

Refreshments available

Booking: £14 (Table provided)
Telephone - **07400 238515**

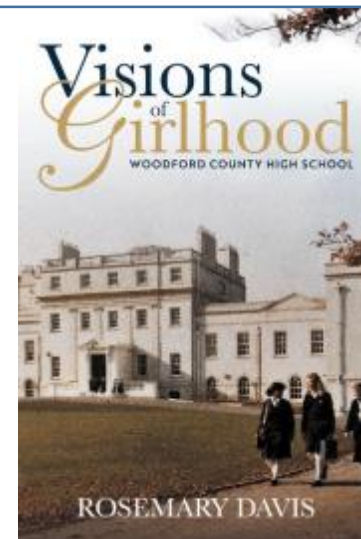
Email: pfwchs@yahoo.co.uk
Booking Form available from
www.woodford.redbridge.sch.uk



Public parking at Sir James Hawkey Hall
Broomhill Road, IG8 0BG

**Admission
50p**

Anyone who has ordered 'Visions of Girlhood' should now collect their copy from Miss Thomas in the main school office. Parents who placed an order can ask their daughter to collect their copy.



Year 11 - Work Experience

Work experience forms should now have come home with your daughter.



Please assist your daughter in finding a placement over the next few weeks and then return the completed form to Mrs Sawyer in the medical room by 20/12/19.

Woodford County High School for Girls



Nominate a Redbridge resident, business or employee and help us recognise and celebrate the achievements of those who have made a real difference to the lives of our residents.

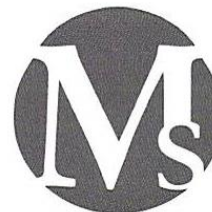
This could be someone who takes pride in the borough, a business that contributes to the community, or a resident that goes out of their way to help others.

The categories for the awards are:

- **Best Business Contribution to the Community**
- **Community / Neighbourhood Champion**
- **Taking Pride in Redbridge**
- **Caring for others in Redbridge**
- **Contribution in Support of Young People**
- **Creating a Safer Redbridge**

Nominations will be open until **Sunday 29 December**

www.redbridge.gov.uk/mayorawards



MELJON CONCERTS 2019 – 2020

Saturday 12th October 2019, 7.30pm

Chingford Parish Church – The Green E4 7EN

NORTHERN LIGHT

A celebration of Norwegian music with the **Dargason Ensemble**

GJEILO Sunrise Mass & GRIEG Holberg Suite

A cappella works by Grieg, Gjeilo, Arnesen & Nystedt

Saturday 30th November 2019, 7.30pm

St John's Arts & Recreation Centre, Old Harlow CM17 0AJ

FUSION!

Choral jazz with the **El Cortado** band

BOBBI FISCHER Missa Latina UK Premiere

Popular songs from the '20s and '30s

Saturday 7th March 2020, 7.30pm

St Mary's Church, South Woodford E18 2PA

A MUSE OF ONE'S OWN

A celebration of choral music by women composers including **Holst** Mass in A minor & **Mackie** Missa Brevis

Saturday 13th June 2020, 7.30pm

St John's Church, Epping CM16 5DN

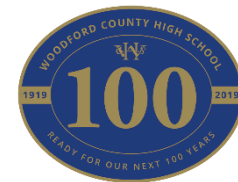
THE GIFT OF LIFE

Works for choir, organ, harp & percussion including **Bernstein** Chichester Psalms & **Rutter** The Gift of Life



Woodford County

High School for Girls



DATES FOR YOUR DIARIES

Thursday 12 December	Christmas concert – 19:00
-------------------------	---------------------------

TERM & HOLIDAY DATES FOR 2019 -2020

AUTUMN 2019

Non Contact Day	Monday 2 September 2019	
Non Contact Day	Tuesday 3 September 2019	
Term	Wednesday 4 September	Friday 18 October
Half-term	Monday 21 October	Friday 25 October
Term	Monday 28 October	Friday 20 December
Non Contact Day	Thursday 3 October 2019	

SPRING 2020

Term	Monday 6 January	Friday 14 February
Half-term	Monday 17 February	Friday 21 February
Term	Monday 24 February	Friday 3 April
Non Contact Day	Wednesday 18 March 2020	

SUMMER 2020

Term	Monday 20 April	Friday 22 May
Half-term	Monday 25 May	Friday 29 May
Term	Monday 1 June	Friday 17 July
Non Contact Day	Monday 20 July 2020	

BANK HOLIDAYS

Please note the following are Bank Holidays:

- Wednesday 25 December 2019 (for Christmas Day)
- Thursday 26 December 2019 (for Boxing Day)
- Wednesday 1 January 2020 (for New Year's Day)
- Friday 10 April 2020 (Good Friday)
- Monday 13 April 2020 (Easter Monday)
- **Friday 8 May 2020** (Early May for VE day)
- Monday 25 May 2020 (Spring bank holiday)