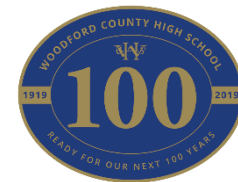


# Woodford County High School for Girls

## Weekly Bulletin

Issue No. 312 Tuesday 15<sup>th</sup> October 2019



### School Uniform requirements

The half-term “to do” list in many households may include top up purchases of uniform or shoes, and visits to the hairdresser. And girls in these year groups are teenagers - it wouldn't be unheard of for a few of them to be set on persuading parents to sanction options which fail to meet uniform requirements. Girls all have ready access to uniform stipulations (including those pertaining to hair colour, to the only permissible piercings, to shoes and to coats) in their planner (pages 17 & 18 – and attached with this bulletin for your convenience). Parents have access to the uniform policy on our website.

You are asked to review the expectations now to avoid unnecessary conflict and expense. If students acquire additional piercings they will have to remove the associated jewellery during school hours, infection risk or not. (They know the school rules.) Similarly inappropriate hair colouring (e.g. the two contrasting tone hair in vogue at present) or shoes will need to be replaced.

Generally when these issues arise it is because students have knowingly misled parents on the subject. The aim of this e-mail is to put you on the front foot and thus to take the heat out of such discussions and to avoid unnecessary wastage.

I wish everyone a restful and recuperative half term.

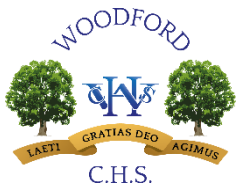
Yours sincerely

**Ms Jo Pomeroy**

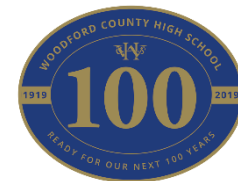
**Headteacher**

The amazing amount raised for Leukaemia Research during the grand tradition of Woodford County's 5p race last Thursday 10<sup>th</sup> October. All four school houses battled it out with a great deal of enthusiasm and even more noise, with Highams emerging victorious after a frantic 45 minutes. A huge thank you to all students, staff and others who made it all happen on the day.

**£2,349.97**



# Woodford County High School for Girls



## **Notice of Annual General Meeting of Parents & Friends of Woodford County High School (PFWCHS\*)** **Wednesday 30th October 2019 at 7.00pm**

Dear All Parents and Carers,

I am just writing to remind you that the PFA's AGM takes place on the 30<sup>th</sup> Oct at 7pm in the school's Conference room.

You are all members of the PFA, which as a registered Charity is designed to enhance the learning and development of Woodford girls, through fundraising and various activities. All of your girls are benefitting every day from the investment in the school made by the PFA. The PFA currently has around 10 'active' members who devote time and energy into the many activities and fund raising events. The PFA cannot survive on the goodwill and input from so few, so it essential that more parents, carers and friends of Woodford get involved.

Please do come along to the AGM and learn about the great work that the PFA has done over the past year, bringing you right up to date with the amazing fundraising performance over the weekend of the school's centenary celebrations. The formal positions of Chair, Vice Chairs, Treasury and Secretary will elected but just as importantly we are looking for more of you to get involved over the coming year.

If you have any questions around the formal positions or generally getting involved, ahead of the AGM, please do email at the following address [secretaryp@woodford.redbridge.sch.uk](mailto:secretaryp@woodford.redbridge.sch.uk)

Yours sincerely

Shaun Dawson  
PFA Chair

\* We are officially registered as Parents and Friends of Woodford County High School with the charities commission but more frequently referred to as Parents & Friends Association (PFA).



Following the recent Parent Governor elections the duly elected Parent Governors are:

**MR AMJAD SHARIF**

**MR MANOJ SHARMA**

Full result details are attached with this bulletin.

# Woodford County High School for Girls



## EAST LONDON INTER FAITH MINI FESTIVAL



SuperSisters

**SATURDAY  
OCTOBER 19**

Promoting the values of acceptance, respect and diversity, the programme of the event will include panel discussions with faith leaders and women of faith, live music and children's activities  
**EVERYONE IS WELCOME, INCLUDING PEOPLE OF RELIGIOUS AND NON-RELIGIOUS BELIEFS**

**1:30PM - 6:00PM**

MUSLIM COMMUNITY CENTRE,  
4 ETON ROAD, ILFORD, IG1 2UE  
hello@supersisters.co.uk | 0207 538 0008



## MAIN STAGE PROGRAMME

ACT	TIME
Live Music	1.30-2.15 pm
Panel Discussion with religious leaders of the community	2.15-3.15 pm
Question time from the public to religious leaders	3.15-3.30 pm
Live Music	3.30-4.15 pm
Panel Discussion with young women of faith	4.15-5.15pm
Live Music	5.15-6.00 pm



Thank  
You!

From all the staff, volunteers,  
children and families at Haven  
House Children's Hospice

This is to certify that

Woodford County High School

raised an amazing

£1,404.09

Signed: *Gunny Donnelly*

Dated: *9th October 2019*

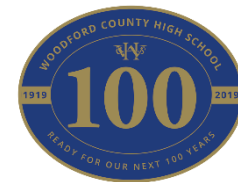
Charity Number: 1044296





# Woodford County

## High School for Girls



### Redbridge Sports and Leisure Tennis Open Day Sunday 20th October from 12pm to 4pm.

The open day will celebrate the completion of the new indoor tennis courts at Redbridge. The day is free to everyone who wants to come along and try everything that Redbridge Tennis has to offer. Our fully qualified and experienced coaching team will be on hand playing fun games and teaching new skills. We will also be running tennis offers and membership deals. All of this takes place on our 8 brand new indoor tennis courts!

For more details please email [Jack@rslonline.co.uk](mailto:Jack@rslonline.co.uk) or register your interest here:

<https://clubspark.lta.org.uk/Events/RedbridgeTennisClub/39e9f8e7-dd5e-4cb6-bbd8-bd7ca70004fc>



## Redbridge Netball Youth Camp

AGES 11 - 14

BOOK  
YOUR  
PLACE  
TODAY

**When:** Wednesday 23rd October (10am-3pm)

**Venue:** Woodbridge School, IG8 7DQ

**Book now at [englandnetball.co.uk/NYC](http://englandnetball.co.uk/NYC)**

**For further information please contact**  
**[kirsty.herbert@englandnetball.co.uk](mailto:kirsty.herbert@englandnetball.co.uk)**  
**England Member Discount Code HTNYC2019**

9th Sept 2019 - 18th Oct 2019

	Monday	Tuesday	Wednesday	Thursday	Friday
Before School (7:50 - 8:30)			Badminton JBR Sports hall		Friday morning mile JBR Field
Lunch time (1:20 - 2pm)	Football (Y9 - 11) HBA Field	Football (Y7 + 8) JBR Field	Indoor Athletics (All Years) KRI Sports hall	Netball (Y7 + 8) HBA + KRI Netball courts	Y11 Fitness Suite VJA
After school* (3:30 - 4:45)	Netball (Y9 - 11) VJA, JBR, HBA Netball courts	Trampolining JBR/VJA Sports hall			

*\*Some after school clubs may be cancelled due to fixtures. Check the notice board regularly.*

### PE Extra-curricular (Autumn 1)

These clubs are run by the PE department and are completely free of charge to pupils. All pupils are welcome even if they are not part of the school team.

The morning Badminton and Trampoline club are restricted to the first 30 and 40 pupils that attend respectively. For morning badminton pupils only need their trainers. For all other clubs pupils need to wear their PE kit.

## Extracurricular – Tuesday Piano Tuition

Could any student having Tuesday piano tuition before 2:00pm please consider exchanging their slot with another student on the following dates and times?

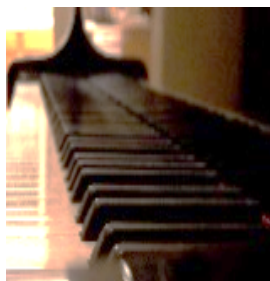
- 15<sup>th</sup> October – 3:15pm
- 29<sup>th</sup> October – 3:00pm
- 5<sup>th</sup> November – 2:45pm
- 12<sup>th</sup> November – 2:30pm

Please email Ms Fontaine at [music@woodford.Redbridge.sch.uk](mailto:music@woodford.Redbridge.sch.uk) if you are able to exchange on any of these days.

## Redbridge Music Service

There is currently a vacancy available for Thursday piano lessons.

If you are interested please email [music@woodford.redbridge.sch.uk](mailto:music@woodford.redbridge.sch.uk)



## November/December After School Clubs 2019



*We still have a few places available in November's after school clubs:*

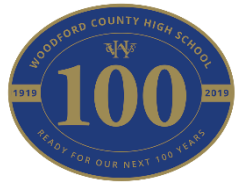
Tuesday basic cooking = 1  
Dance = 4  
Nail Art = 5  
Jewellery = 7  
Self-defence = 5  
Knitting = 5  
Calligraphy = 5

*Please go to ParentPay to secure your daughter's place.  
Thank you*





# Woodford County High School for Girls



Registered Charity No (1103422)

## Indoor Boot Sale

(Raising funds for the school)

**SUNDAY 9.30am -12pm**

**13 October 2019**  
**17 November 2019**  
**8 December 2019**  
**19 January 2020**  
**16 February 2020**  
**15 March 2020**

at

**Woodford County High School**

High Road, Woodford Green, Essex IG8 9LA

*Refreshments available*

**Booking: £14** (Table provided)

Telephone - **07400 238515**

Email: [pfwchs@yahoo.co.uk](mailto:pfwchs@yahoo.co.uk)

Booking Form available from

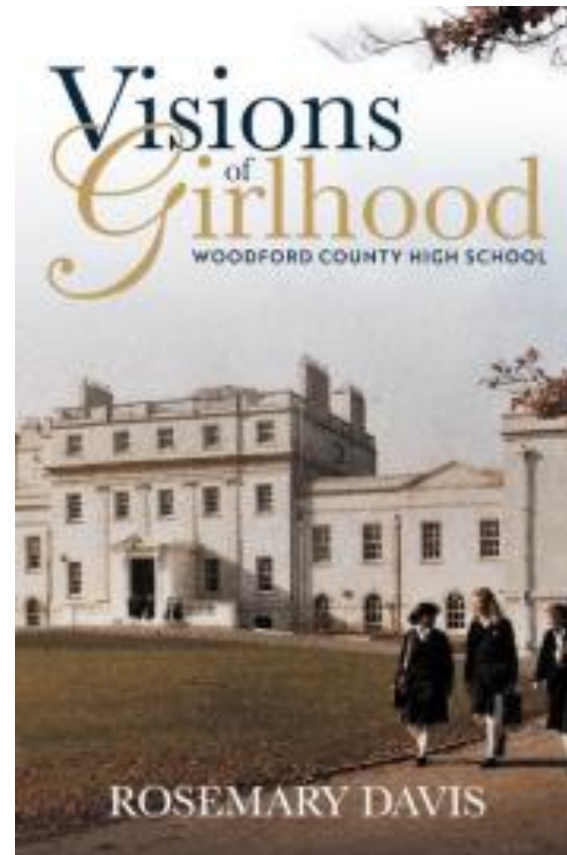
[www.woodford.redbridge.sch.uk](http://www.woodford.redbridge.sch.uk)



Public parking at Sir James Hawkey Hall  
Broomhill Road, IG8 0BG

**Admission  
50p**

Anyone who has ordered 'Visions of Girlhood' should now collect their copy from Miss Thomas in the main school office. Parents who placed an order can ask their daughter to collect their copy.



### Come and Sing with The Meljon Singers



We are holding an

### Open Rehearsal

Wednesday 6 November 2019, 7.30 – 10.00pm at  
St John's Church, St Johns Rd, Ilford IG2 7BB

At a concert on Saturday 30 November  
The Meljon Singers conducted by Janette Ruocco will give the

### UK premiere of Bobbi Fischer's Missa Latina

All voices welcome so come and be a part of this exciting project,  
singing the words of a traditional Latin mass to the sounds  
and rhythms of a Latin jazz ensemble

Music provided. Just drop an email to Pam at [info@meljon.org.uk](mailto:info@meljon.org.uk)  
if you have any questions and to let us know you're coming

Check out our website at [www.meljon.org.uk](http://www.meljon.org.uk)  
for more information and directions



### MELJON CONCERTS 2019 – 2020

**Saturday 12th October 2019, 7.30pm**  
Chingford Parish Church – The Green E4 7EN

### NORTHERN LIGHT

A celebration of Norwegian music with the **Dargason Ensemble**  
**GJEILO Sunrise Mass & GRIEG Holberg Suite**  
A cappella works by Grieg, Gjeilo, Arnesen & Nystedt

**Saturday 30th November 2019, 7.30pm**  
St John's Arts & Recreation Centre, Old Harlow CM17 0AJ

### FUSION!

Choral jazz with the **El Cortado** band  
**BOBBI FISCHER Missa Latina** UK Premiere  
Popular songs from the '20s and '30s

**Saturday 7th March 2020, 7.30pm**  
St Mary's Church, South Woodford E18 2PA

### A MUSE OF ONE'S OWN

A celebration of choral music by women composers  
including **Holst** Mass in A minor & **Mackie** Missa Brevis

**Saturday 13th June 2020, 7.30pm**  
St John's Church, Epping CM16 5DN

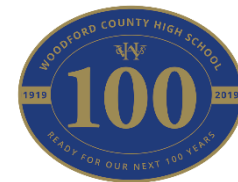
### THE GIFT OF LIFE

Works for choir, organ, harp & percussion  
including **Bernstein** Chichester Psalms & **Rutter** The Gift of Life



# Woodford County

## High School for Girls



### DATES FOR YOUR DIARIES

Tuesday 15 October	Sixth form A level Options / Widening Horizons - 18:00 – 20:00
Thursday 17 October	Music Recital Evening - 18:00
Wednesday 30 <sup>th</sup> October	Year 7 Curriculum Meeting – 17.00
Week of Mon 4 November	6 <sup>th</sup> Form Open Mornings
Thursday 7 November	<b>PRIZEGIVING 2018-19 - 18:30</b>
Thursday 14 November	House Drama Festival public performance – 18:00-21:00
Thursday 12 December	Christmas concert – 19:00

### TERM & HOLIDAY DATES FOR 2019 -2020

#### AUTUMN 2019

<b>Non Contact Day</b>	<b>Monday 2 September 2019</b>	
<b>Non Contact Day</b>	<b>Tuesday 3 September 2019</b>	
<b>Term</b>	Wednesday 4 September	Friday 18 October
<b>Half-term</b>	<b>Monday 21 October</b>	<b>Friday 25 October</b>
<b>Term</b>	Monday 28 October	Friday 20 December
<b>Non Contact Day</b>	<b>Thursday 3 October 2019</b>	

#### SPRING 2020

<b>Term</b>	Monday 6 January	Friday 14 February
<b>Half-term</b>	<b>Monday 17 February</b>	<b>Friday 21 February</b>
<b>Term</b>	Monday 24 February	Friday 3 April
<b>Non Contact Day</b>	<b>Wednesday 18 March 2020</b>	

#### SUMMER 2020

<b>Term</b>	Monday 20 April	Friday 22 May
<b>Half-term</b>	<b>Monday 25 May</b>	<b>Friday 29 May</b>
<b>Term</b>	Monday 1 June	Friday 17 July
<b>Non Contact Day</b>	<b>Monday 20 July 2020</b>	

#### **BANK HOLIDAYS**

Please note the following are Bank Holidays:

- Wednesday 25 December 2019 (for Christmas Day)
- Thursday 26 December 2019 (for Boxing Day)
- Wednesday 1 January 2020 (for New Year's Day)
- Friday 10 April 2020 (Good Friday)
- Monday 13 April 2020 (Easter Monday)
- **Friday 8 May 2020** (Early May for VE day)
- Monday 25 May 2020 (Spring bank holiday)