



Year 7 Induction 2020

The Building

(photos mostly taken by current year 7 students)



The Pedestrian Gate!

This is where you will enter the school. In September you will say goodbye to your parents here.

There will be key members of staff and 6th formers to greet you and show you where to go next.



This is the Front Lawn. On your first day you will enter through the gate and gather on the lawn in your form groups. (Don't worry, there will be people to help and guide you!).

A rare treat as the lawn is not an area students are normally allowed on!



This is front of the main building. This door is for staff, 6th form students and parents.

Inside here is where the main school office is found. Can you locate this on your map?



The School is made of a few buildings. You have the main building, where you will find the office, canteen as well as lots of classrooms.

The Centenary Centre is where you will find Maths and Science labs.

Then there is the Art and Technology block and the Sports Hall.



What's in a name?

- All parts of the school have room names that will help you locate where you are or need to be!
 - All rooms in the Centenary Centre start with either CC or Lab. For example CC5 and Lab7. The numbers get higher the further up you go.
 - In the main building they are in zones. All the rooms at the South end of the building are called either SF – South end First floor or SG – South end Ground floor! The North end all start with N e.g. N2. We even have some rooms in the old upstairs part of the school, such as Latin / Classics classrooms – these are called House and start with a H e.g. H3.
 - In the House part of the school you will also find our Spiritual Space / Prayer room.
- Can you find these zones on your maps?



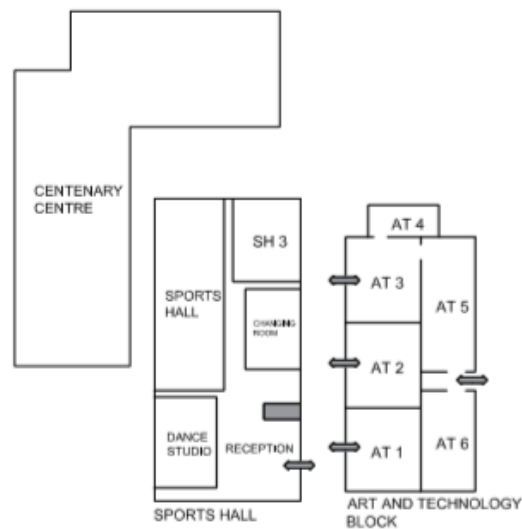
Maps

Main Building

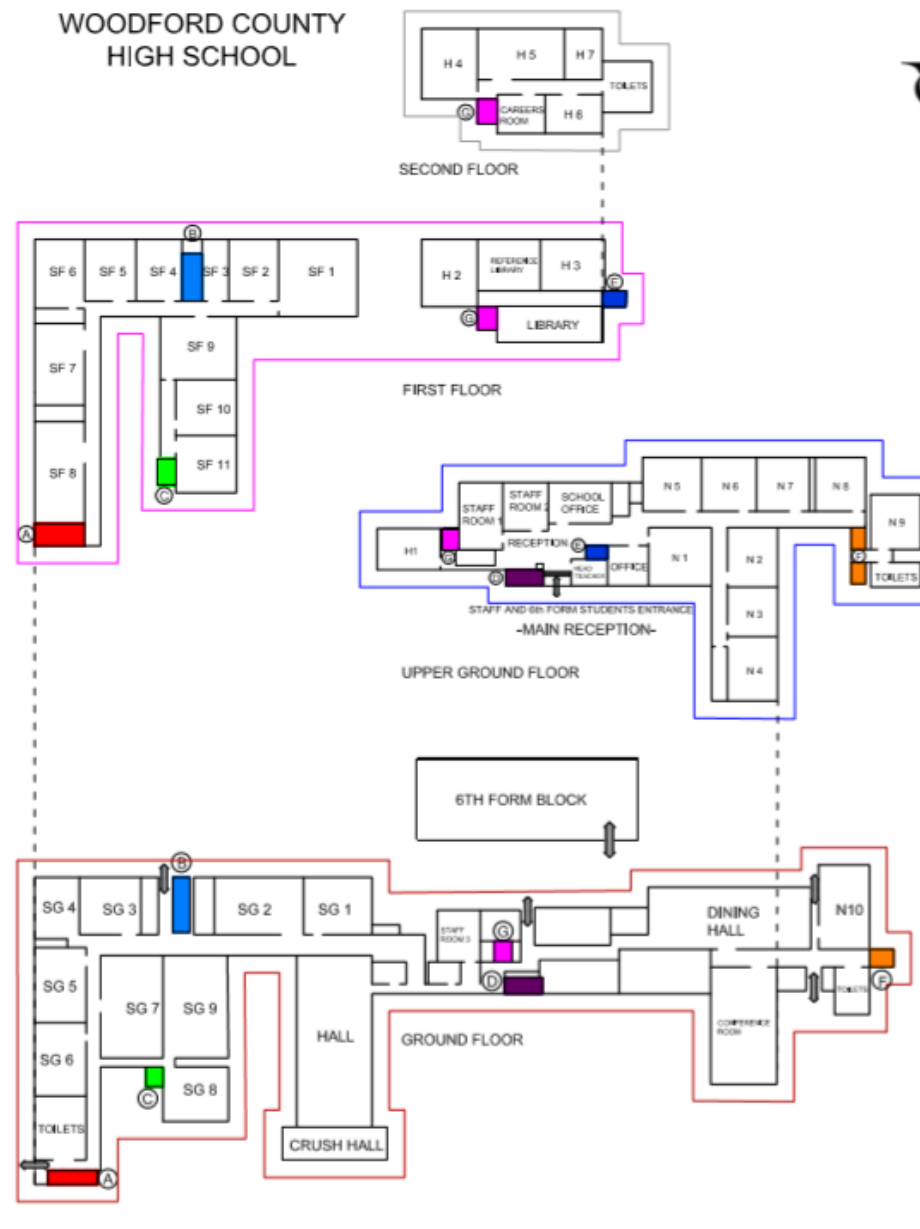
KEY
STAIRCASES A B C D E F G

GROUND FLOOR
UPPER GROUND FLOOR
FIRST FLOOR
SECOND FLOOR

North (English/MFL area) - All rooms have the prefix N
House (MFL/Classics) - All rooms have the prefix H
South (Humanities/Computing/Food)
All ground floor rooms have the prefix SG
All first floor rooms have the prefix SF

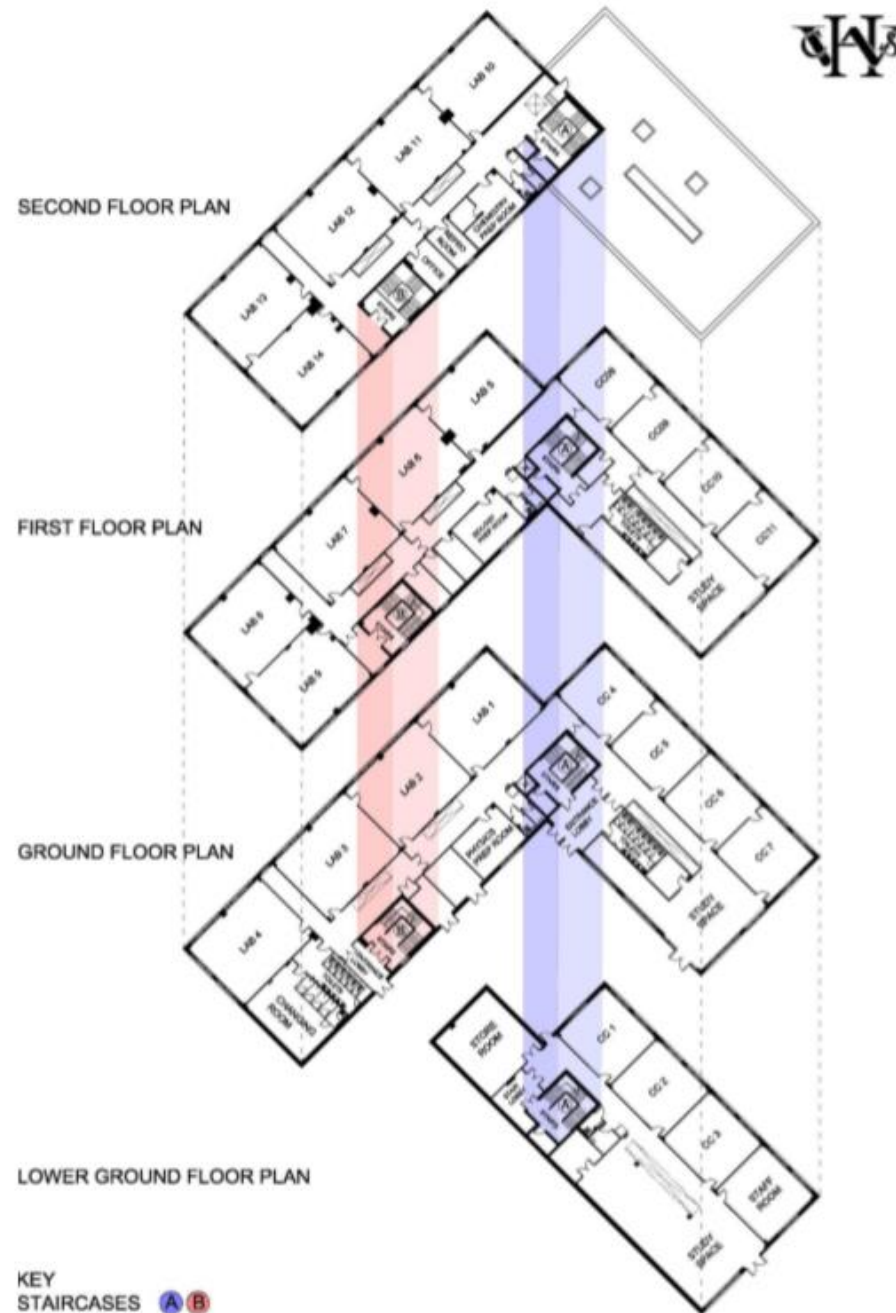


WOODFORD COUNTY HIGH SCHOOL



Maps

Centenary Centre



Maps – click on the links to see the map as PDF document.

- **Main Building**
- **Centenary Centre**





This is the school canteen.

Normally there are a lot more tables in here!

There will be two queues in, one from either side and both sides of the serving area offer the same food!

There is a choice of hot and cold food.

Take a look on the website to see some example menus.



This is the back terrace.

You will spend a lot of time here.

There are benches for you to use to eat your packed lunch and areas to sit and chat with your friends.

This terrace runs the entire length of the back of the school – you will also use it to get to and from the different buildings.

This is the Sports Field and
Netball Courts.





The Sports Hall and Dance Studio



The Greek theatre. Here you might find open air assemblies, lessons and 'Busking Thursday'.





This is the Junior Library.

This is in the main building of the school.

You will have an introduction to the Library in a PSHCE lesson when you start. You will meet Mrs Horn the librarian and learn how to use it. You are always welcome here.



These are the House banners. They can be found in the main entrance hall, next door to Ms Pomeroy's office.

You have information of the House System in your Getting to know Woodford Booklet.

Look out for the House PowerPoint later on – once you know what House you are in!



The Student Support Office.

This is in the Main Building and is where you will find Miss Allen, the KS3 Administrator.



The Main School Office.

This can be found in the main building – can you find this on your map? There are a lot of helpful people in this office!

The Main Hall.

You will have assemblies here
on Tuesday and Thursday
every week.

