

Yr13 MMI medicine and dentistry event

Dear All,

Thank you so much to those who have registered their availability for the MMI Event at WCHS. Given the responses received, this email is to confirm that the event will be held on **Friday 8th December 2023**.

If you work in the medical or dental fields, and with the date now confirmed, please kindly fill in the form below to confirm your availability for the day. The event is expected to run from 9am - 1pm, with registration from 8am. I hope that you will be able to attend the whole event, but understand if this is not possible. You will have option to outline what times you are available should you only be able to make part of the event. Please note that multiple submissions are possible should you need to update your availability.

Also, should you know of anyone in the medical or dental fields who may be able to volunteer on the day, please forward the form onto them.

<https://forms.office.com/e/iai4eSRyNk>

Thank you so much, and I will be in touch soon with further details. Should you have any questions or queries, please do not hesitate to contact me.

Best wishes,

Saira Khan

Deputy Head of Science

khans@woodford.redbridge.sch.uk



RAFFLE GIFTS

Please could you donate any unwanted gifts etc to the main school office.

We would like to create prize hampers for a raffle on the House Drama event, which is on 16 November 2023.

Deadline for offering donations is 13 November 2023.

Please be generous.

We are also looking for businesses who can donate any vouchers.

Many thanks

Iffat

PFA



EPT COFFEE MORNING

Date : FRIDAY 3rd November 2023

Time: 10am to 12pm

Venue: Gearies Children's Centre, Gants Hill, IG2 6TF

**MEET REDBRIDGE SPECIALIST EDUCATION AND
TRAINING SUPPORT SERVICE (SEaTSS)**



info@empoweringparentstogether.org.uk



07486 880 799

07486 880 646



YEAR 9 STUDENTS

TOP SECRET

GOOD AT SOLVING PUZZLES?
CRACKING CODES IN MINUTES?
HAVE AN EYE FOR A PATTERN?
QUICK - FORM YOUR TEAM!

N2 WILL BE HEADQUARTERS
LINGUISTS ASSEMBLE!
COMplete the sign up form here:

<https://forms.office.com/E/2APa7PX1CA>

6 - 10 NOVEMBER 2023



Woodford County Eco Info

As a school community we all have the responsibility to create a sustainable future for our beautiful planet.

**November 2023
sustainability and
environmental
awareness dates**



World Vegan Month – 1st to 30th Nov

World Basking Shark Day – 3rd Nov

World Kindness Day – 13th Nov

One World Week – 14th to 20th Nov

World Fisheries Day - 21st Nov

Buy Nothing Day – 24th Nov

National Tree Week – 25th Nov to 3rd Dec

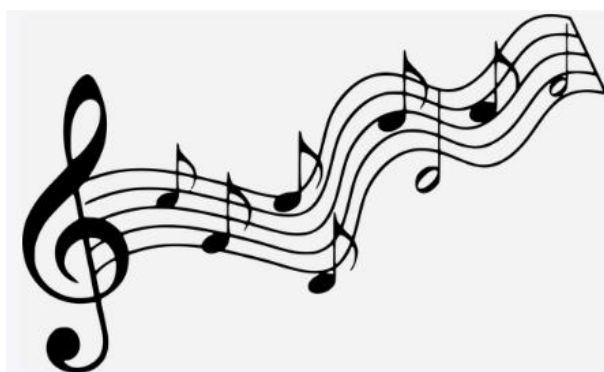
International Jaguar Day – 29th Nov

<https://moralfibres.co.uk/environmental-days-and-dates-to-know/#november-days>

https://www.reduceuserecycle.co.uk/greenarticles/november_environmental_days.php

Music Extra-Curricular Timetable: Winter 2023

	Monday	Tuesday	Wednesday	Thursday	Friday
Lunchtime	Junior Choir Ms Nina (SF1) 13:30- 14:10 Senior choir JMI (Main Hall) 13:40-14:15 Brass Ensemble (Jubilee room) 13:45-14:15 Kalimba Club (Conference room) 13:40-14:15	Junior Band IBO (SF1) 13:30- 14:10 Flute ensemble (please speak to Ms Hannent if interested) KHN 13:40-14:10 Musical Theatre Club (Conference Room) 13:40-14:10	Jazz Band KHN (SF1) 13:40-14:15 String orchestra IBO (SF2) 13:40-14:15 Carnatic Ensemble (Jubilee Room 1) 13:30-14:20 Ukelele Club (Jubilee Room 2) 13:40-14:15	Theory and GCSE/A-level support IBO (SF2) 13:40-14:15	Orchestra IBO (SF1) 13:40-14:15 Guitar Ensemble (SF2) 13:40-14:15
After school		Chamber groups IBO (SF1/2) 15:45-16:30			



WCHS - ECTT – Term 2

	<u>Mon</u>	<u>Tues</u>	<u>Weds</u>	<u>Thurs</u>	<u>Fri</u>
<u>Before School</u> <u>7.50-8.20am</u>					<u>Yr12&13</u> <u>Badminton</u> STA
<u>Lunchtime</u> <u>1.30-2pm</u>	<u>Volleyball</u> <u>(all)</u> VJA <u>Trampolin-</u> <u>ing</u> KRU Week A = yr9-11 Week B = yr7&8	<u>*Netball -</u> <u>SQUAD Train-</u> <u>ing Only*</u> + Sixth formers STA, VJA, HBA, KRU	<u>Football Train-</u> <u>ing</u> Week A = yr7 & 8 HBA Week B = yr9-11 STA <u>Athletics</u> (all) KRI	<u>Badminton</u> VJA Week A = yr7&8 Week B = yr9 -11	<u>Yr10 & 11</u> <u>GCSE Tram-</u> <u>polining &</u> <u>Badminton</u> STA & KRU <u>Cross Coun-</u> <u>try</u> (all) KRI
<u>After-school</u> <u>3.30-4.20pm</u>			<u>*FIXTURES*</u>		





LIVE FOR THE MOVEMENT

Sign up today for **FREE**
weekly fitness classes

Calling all girls aged 11-16! Check
out our new **MOVE TOGETHER**
FITNESS CLASSES.

Good for both body and mind
our specially designed classes
will help you to build strength,
confidence and get you moving.
It's the perfect opportunity to
have fun with friends.

Find out more

MOVE TOGETHER

Join our next class at...

Time:

Date:

Location:

nuffieldhealth.com/movetogether



Support for residents struggling with the cost of living



Please see the message below from The London Borough of Redbridge:

Please can you send the following links to families which will support them with the cost of living:

[Cost of Living \(redbridge.gov.uk\)](https://redbridge.gov.uk/cost-of-living)

[Cost of Living - Cost of Living payment \(redbridge.gov.uk\)](https://redbridge.gov.uk/cost-of-living-payment)

[Cost of Living - Foodbanks \(redbridge.gov.uk\)](https://redbridge.gov.uk/cost-of-living-foodbanks)

There is the [Ilford Community Grocery](https://communitygrocery.org.uk/ilford/) - we urge every family in need to join the Ilford Community Grocery, 25-29 Clements Rd where residents can buy food at 80% discount:

For the longer term you may be interested in buying your groceries at the Ilford Community Grocery. Join this grocery for £5 a year and you can buy 12 items for just £5. It is located at 25-29 Clements Rd, Ilford.

It is open Monday through Friday 9:30am - 4:30pm.

More details: <https://communitygrocery.org.uk/ilford/>

Educational Psychology Service Parent Helpline

Would you like to talk to someone?

Do you need some support with creating a daily routine for your child?

Are you concerned about your child's emotional wellbeing?

Are you struggling to motivate your children at home or manage sibling relationships?

The Educational Psychology Service (EPS) are here to support you.

We have a **dedicated telephone helpline for parents/carers** where you will receive advice and guidance from a professional

Educational Psychologist.

The EPS helpline is available for all parents and carers - your child does not need to be known to the EPS, does not need to have a special educational need or additional support within school.

We welcome calls from all parents and carers.

EPS Helpline

Telephone: 07741 331 009

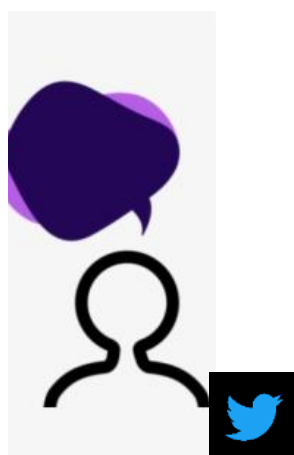
Opening hours:

Every Wednesday 10am - 4pm

Webpage: <https://www.redbridge.gov.uk/schools/educational-psychology-service/>

FIND: [Educational Psychology Service](#)

@Redbridge_aep Twitter account.



DATES FOR THE DIARY

AUTUMN 2023		
Term	Wednesday 6 September 2023	Friday 20 October 2023
WCHS Remote Schooling	Friday 15 September 2023	Students studying from home
Half-term	Monday 23 October 2023	Friday 27 October 2023
Term	Monday 30 October 2023	Wednesday 20 December 2023
Non-Contact Day	Thursday 12 October 2023	

SPRING 2024		
Term	Thursday 4 January 2024	Friday 16 February 2024
Half-term	Monday 19 February 2024	Friday 23 February 2024
Term	Monday 26 February 2024	Thursday 28 March 2024
Spring Break	Monday 1 April 2024	Friday 12 April 2024
Non-Contact Day	Wednesday 6 March 2024	



KEY DATES TO REMEMBER

1 November—Year 7 Curriculum Information Evening
Week of 6 November—Warner House Charity Week
16 November—House Drama Event
23 November—GCSE Prizegiving 2023-24
28 November—Year 13 Parents Evening
4 December—Year 11 Parents Evening
14 December—Christmas Concert
18 December—Year 13 (2020-2021) Certificate & Social Event
20 December—End of Term



wchs_geog
WoodfordCHS_UK_Geography



Instagram

REMINDER

Please remind your daughter to bring in her lanyard, locker key and fob to school every day.

