

PFA AGM MEETING

Reminder: PFA AGM to be held in school tomorrow, **29 November at 6pm** in the library.

We have vacancies for Secretary, Treasurer and for additional committee members.

Please join us.

All welcome

Iffat Hayat, PFA Chair



CHRISTMAS CONCERT RAFFLE

PFA would like to ask for donations of unwanted gifts for the prize hampers at the Christmas concert Raffle.

Your generosity is greatly appreciated.

Iffat Hayat

PFA Chair





Christmas Lunch Tickets are on sale NOW

Available to buy in the Dining Hall during

BREAKFAST and LUNCH sessions

From Monday 20th November to Monday 4th December

Lunch is on Tuesday 12th December for Yr.7-11 A-C &

Wednesday 13th December Yr.7-11 D-F



LOST PROPERTY

Wooden trunk in Reception

We have a large number of water bottles, umbrellas, lunch boxes etc. in our lost property box.

If your daughter has misplaced anything, could you please prompt her to look in the lost property box as soon as possible.



CHRISTMAS CONCERT

Dear parents/carers,

Many of you will be pleased to know that there have been a few cancellations with regards to Christmas Concert bookings. As a result, **12** more tickets will become available for you to book. To ensure everyone has a fair chance of acquiring tickets, they will be released at 17:00 on Thursday 30th November.

We would also like to reiterate/reemphasise the fact that you are permitted to only book a maximum of three tickets - we have had quite a few people book multiple times as a way to secure more than this amount. Please take into consideration the fact that many students will be performing at this event, and we would want as many of them feeling supported by at least one family member/friend coming to watch them. Please also be reminded that your child who is performing at the concert does not require a ticket booked for them.

Many thanks, WCHS Music department.





Save the Children
**CHRISTMAS
JUMPER DAY**



Thursday 7th December is
WCHS Christmas Jumper Day!

£2.00**

Wear a **CHRISTMAS JUMPER*** with your **non-uniform**
and help to raise money for the Save the Children

*Christmas Jumper OR Customise a jumper!



**CHRISTMAS
JUMPER DAY**

** Parent Pay is open! Please donate your £2.00 via
parent pay

Funded by



Department
for Education

London Borough of

Redbridge



Holiday Activities and Food
London Borough of Redbridge
Gearies Children's Centre
Waremead Road, Gants Hill,
Ilford, Essex, IG2 6TF

November 2023

Dear Parent/Carer

Winter Holiday FUN: Thursday 21st December – Wednesday 3rd January 2024

Good News! We are offering your child a free programme of fun and food this Winter.

Your invitation

You are receiving this letter as your child is in a year group ranging from Reception to Year 11 and is eligible for benefits-related Free School Meals.

Activities on offer

We have a fun-filled programme across Redbridge, ranging from multi sports, arts and crafts, drama, cookery and much more! It is a great opportunity for your child to develop new skills and make new friends. Lunch is also provided at every session!

All activities are delivered by approved providers with a focus on physical fun, nutritional education and learning new skills. Providers also have experience with special educational needs and disabilities.

How to Book

To find out what's on offer please visit Redbridge HAF: <https://find.redbridge.gov.uk/haf>

Alternatively for quick and easy access to our HAF page on your device please scan the QR code below.



Kind regards

Redbridge Holiday Activity and Food (HAF) Programme



Redbridge Winter Holiday Fun

From
DEC to
JAN



Creative Media



Arts & Crafts



Multi-sports

- ✓ Free food
- ✓ Free activities
- ✓ New friends
- ✓ New skills

Is your child in
Reception to Year 11
and in receipt of
Benefit Related
Free School Meals?

Enjoy **FREE** sports, arts & crafts,
drama, cooking and MORE!

scan me



TO BOOK YOUR PLACE -

scan this QR code, visit:

<https://find.redbridge.gov.uk/haf>

or email: haf@redbridge.gov.uk

Funded by



Department
for Education

WCHS THEATRE SOCIETY

HAMILTON

Tuesday 9TH January 7.30pm

Victoria Palace Theatre

TICKETS AVAILABLE FOR £40.00

TICKETS NOW ON SALE FOR...

THE MOTIVE & THE CUE – Wednesday 10th January 2024 @ 7:30pm, Noel Coward Theatre **£30**

GUYS & DOLLS – Tuesday 6th February 2024 @ 7:30pm, Bridge Theatre ****STANDING ONLY** £27.50**

THE CURSED CHILD – Wednesday 6th March 2024 Part 1 @ 2pm, Part 2 @ 7pm, Palace Theatre **£50 (incl. both parts)**

THE LION KING – Tuesday 12th March 2024 @ 7:30pm, Lyceum Theatre **£35**

LONDON TIDE – Monday 15th April 2024 @ 7pm, National Theatre (Lyttelton) **£15**

MAMMA MIA! – Wednesday 1st May 2024 @ 7:30pm, Novello Theatre **£30**

THE DEVIL WEARS PRADA – Wednesday 6th November 2024 @ 7:30pm, Dominion Theatre **£30**

The WCHS Theatre Society is a PFA initiative. An adult must accompany lower school students – this is not a school trip and is not supervised. For more information and to book tickets, email Ms Horn in the library.

PAYMENT MADE VIA PARENTPAY. Search for PFA Theatre Society.

library@woodford.redbridge.sch.uk



PFA **CHS** and **FO** **CHS** presents...

WINTER DISCO

7 December 2023, 6pm - 8pm

Year 7 & 8

BOOK
TICKETS
NOW
£8.50

* Pay via parent pay

* Refreshments available for purchase on the night

Woodford County Eco Info

As a school community we all have the responsibility to create a sustainable future for our beautiful planet.



For more information and activities this week go to:

<https://treecouncil.org.uk/seasonal-campaigns/>

Listen to FREE online tree talks including:

- MistleGo! Help us find Britain's mistletoe
Wed 29 Nov 2023 1:00pm - 2:00pm

<https://www.tickettailor.com/events/thetreecouncil/1067687>

- Trees in your garden – How to choose?
Fri 1 Dec 2023 1:00pm - 2:00pm

<https://www.tickettailor.com/events/thetreecouncil/1067668>

Have a tree party!

<https://treecouncil.org.uk/seasonal-campaigns/national-tree-week/tree-party-resources/>

Don't forget to continue with the **CUT YOUR CARBON** campaign

CANTEEN

Innovate IFG

TARIFF SEPTEMBER 2023

DRINKS	PRICE	BREAKFAST	PRICE
Water 330ml	80p	Breakfast Roll	£2.05
Fruit Slush – Med/Lrg	90p/£1.45	Small Breakfast Baguette	£1.40
Capri Sun	£1.30	3 Piece Breakfast Pot	£2.00
Dalston Cans	£1.40	Toast with Butter or Jam	35p
Radnor 200ml Carton	£1.10	Pancake with Topping	£1.25
Milk / Flavoured Carton	£1.00	Waffle with Topping	£1.55
HOMEBAKES		Pastries & Croissants	£1.55
Muffins	£1.30	Cereals + Milk	90p
Mini Cakes	From 40p	Porridge for Staff	Free/ £1.05
Cookies	£1.15	Porridge for Students	Free
Chocolate / Cheese Straw	£1.15	Porridge Toppings	40p Each
HOT GRAB & GO		COLD GRAB & GO	
Ciabatta	£3.20	Roll	£1.00
Panini	£2.60	Sub	£2.05
Toastie	£2.15	Wrap	£2.60
Loaded Nachos	£2.25	Street Vibes & Naturally	From £2.85
Garlic Dough Balls	£1.40	Baguette	£2.65
Burrito	£2.65	Cold Pasta Pot – Med/Lrg	£1.00/£2.50
Chicken Wings	£2.15	Sml Self-Serve Salad Bar	£1.80
Shawarma	£2.65	Houmous Pot	£1.20
Pizza Slice	£1.50	Edamame Beans	£1.60
Street Vibes	£2.60	Sushi	£3.00
Naturally (V / Ve)	From £2.65	Yoghurt/Jelly/Fruit Pots	£1.00
Hot Pasta Pot – Med/Lrg	£2.15/£2.50	Whole Fruit	55p
Jacket Potato – 1 Topping	£2.05		

VAT on hot food and beverages will be charged at the current rate for all staff members



AUTUMN 2023 WEBINARS

Register with Mrs Horn, in the Library.

hornd@woodford.redbridge.sch.uk

DECEMBER 2023

5th, 2.15pm – 3.00pm: *History – What Does it Mean to be British?* with Goldsmiths' Uni

5th, 3.45pm – 4.30pm: *Law/Criminology – The Criminal Justice System* with Aberystwyth Uni

6th, 1.30pm – 2.15pm: *Photography – The Persuasive Power* with Solent Uni

6th, 4pm – 4.45pm: *MFL Theatre Society – Brecht's Epic Theatre* with Aberystwyth Uni

7th, 4.30pm – 5.15pm: *HE – How to Manage Money at Uni* with UEA

REGISTER WITH MRS HORN, IN THE LIBRARY. hornd@woodford.redbridge.sch.uk

Educational Psychology Service Parent Helpline

Would you like to talk to someone?

Do you need some support with creating a daily routine for your child?

Are you concerned about your child's emotional wellbeing?

Are you struggling to motivate your children at home or manage sibling relationships?

The Educational Psychology Service (EPS) are here to support you.

We have a **dedicated telephone helpline for parents/carers** where you will receive advice and guidance from a professional

Educational Psychologist.

The EPS helpline is available for all parents and carers - your child does not need to be known to the EPS, does not need to have a special educational need or additional support within school.

We welcome calls from all parents and carers.

EPS Helpline

Telephone: 07741 331 009

Opening hours:

Every Wednesday 10am - 4pm

Webpage: <https://www.redbridge.gov.uk/schools/educational-psychology-service/>

FIND: [Educational Psychology Service](#)

@Redbridge_aep Twitter account.



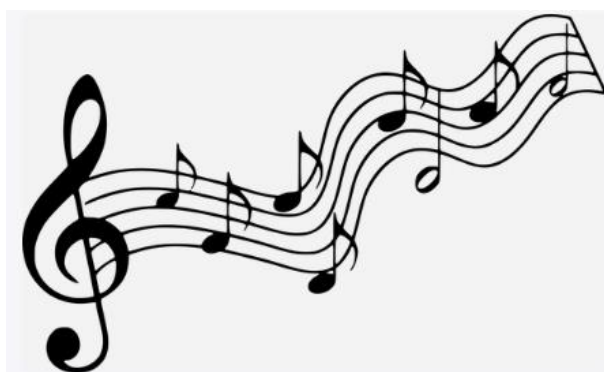
WCHS - ECTT – Term 2

	<u>Mon</u>	<u>Tues</u>	<u>Weds</u>	<u>Thurs</u>	<u>Fri</u>
<u>Before School</u> <u>7.50-8.20am</u>					<u>Yr12&13</u> <u>Badminton</u> STA
<u>Lunchtime</u> <u>1.30-2pm</u>	<u>Volleyball</u> <u>(all)</u> VJA <u>Trampolin-</u> <u>ing</u> KRU Week A = yr9-11 Week B = yr7&8	<u>*Netball -</u> <u>SQUAD Train-</u> <u>ing Only*</u> + Sixth formers STA, VJA, HBA, KRU	<u>Football Train-</u> <u>ing</u> Week A = yr7 & 8 HBA Week B = yr9-11 STA <u>Athletics</u> (all) KRI	<u>Badminton</u> VJA Week A = yr7&8 Week B = yr9-11	<u>Yr10 & 11</u> <u>GCSE Tram-</u> <u>polining &</u> <u>Badminton</u> STA & KRU <u>Cross Coun-</u> <u>try</u> (all) KRI
<u>After-school</u> <u>3.30-4.20pm</u>			<u>*FIXTURES*</u>		



Music Extra-Curricular Timetable: Winter 2023

	Monday	Tuesday	Wednesday	Thursday	Friday
Lunchtime	Junior Choir Ms Nina (SF1) 13:30- 14:10 Senior choir JMI (Main Hall) 13:40-14:15 Brass Ensemble (Jubilee room) 13:45-14:15 Kalimba Club (Conference room) 13:40-14:15	Junior Band IBO (SF1) 13:30- 14:10 Flute ensemble (please speak to Ms Hannent if interested) KHN 13:40-14:10 Musical Theatre Club (Conference Room) 13:40-14:10	Jazz Band KHN (SF1) 13:40-14:15 String orchestra IBO (SF2) 13:40-14:15 Carnatic Ensemble (Jubilee Room 1) 13:30-14:20 Ukelele Club (Jubilee Room 2) 13:40-14:15	Theory and GCSE/A-level support IBO (SF2) 13:40-14:15	Orchestra IBO (SF1) 13:40-14:15 Guitar Ensemble (SF2) 13:40-14:15
After school		Chamber groups IBO (SF1/2) 15:45-16:30			





LIVE FOR THE MOVEMENT

Sign up today for **FREE**
weekly fitness classes

Calling all girls aged 11-16! Check
out our new **MOVE TOGETHER**
FITNESS CLASSES.

Good for both body and mind
our specially designed classes
will help you to build strength,
confidence and get you moving.
It's the perfect opportunity to
have fun with friends.

Find out more

MOVE TOGETHER

Join our next class at...

Time:

Date:

Location:

nuffieldhealth.com/movetogether



Support for residents struggling with the cost of living



Please see the message below from The London Borough of Redbridge:

Please can you send the following links to families which will support them with the cost of living:

[Cost of Living \(redbridge.gov.uk\)](https://redbridge.gov.uk/cost-of-living)

[Cost of Living - Cost of Living payment \(redbridge.gov.uk\)](https://redbridge.gov.uk/cost-of-living-payment)

[Cost of Living - Foodbanks \(redbridge.gov.uk\)](https://redbridge.gov.uk/cost-of-living-foodbanks)

There is the [Ilford Community Grocery](https://communitygrocery.org.uk/ilford/) - we urge every family in need to join the Ilford Community Grocery, 25-29 Clements Rd where residents can buy food at 80% discount:

For the longer term you may be interested in buying your groceries at the Ilford Community Grocery. Join this grocery for £5 a year and you can buy 12 items for just £5. It is located at 25-29 Clements Rd, Ilford.

It is open Monday through Friday 9:30am - 4:30pm.

More details: <https://communitygrocery.org.uk/ilford/>



PREGNANCY YOGA

MONDAY 7:30 - 8:30PM

DANCE STUDIO, WOODFORD COUNTY
HIGH SCHOOL

BOOK YOUR SPOT: [YOUSEFIYOGA.COM](https://yousefiyoga.com)

It takes a special person to care for a special person

Foster for Redbridge

020 8708 6068

fostering@redbridge.gov.uk



It takes a special person to care for a special person.

Gloria Samuel, Service Manager for Fostering and Children with Disabilities Services in Redbridge Council, previously fostered for 20 years. Many of the children she cared for had physical and learning disabilities. Now retired from fostering, Gloria states “I don’t think potential foster carers realise just how much training and support is available when looking after children who happen to be disabled or have additional needs. There are many different care packages offered to support the child and foster carers fully and the training involved is outstanding”.

If you are considering fostering and would like to know more, please email fostering@redbridge.gov.uk or call us on 020 8708 6068 or visit <https://www.redbridge.gov.uk/fosteringschools> to book a place at one of our information sessions.

DATES FOR THE DIARY

AUTUMN 2023		
Term	Wednesday 6 September 2023	Friday 20 October 2023
WCHS Remote Schooling	Friday 15 September 2023	Students studying from home
Half-term	Monday 23 October 2023	Friday 27 October 2023
Term	Monday 30 October 2023	Wednesday 20 December 2023
Non-Contact Day	Thursday 12 October 2023	

SPRING 2024		
Term	Thursday 4 January 2024	Friday 16 February 2024
Half-term	Monday 19 February 2024	Friday 23 February 2024
Term	Monday 26 February 2024	Thursday 28 March 2024
Spring Break	Monday 1 April 2024	Friday 12 April 2024
Non-Contact Day	Wednesday 6 March 2024	



KEY DATES TO REMEMBER

28 November—Year 13 Parents Evening
 4 December—Year 11 Parents Evening
 7 December—Christmas Jumper Day
 12 / 13 December—School Christmas Lunch
 14 December—Christmas Concert
 18 December—Year 13 (2020-2021) Certificate & Social Event
 20 December—End of Term



REMINDER

Please remind your daughter to bring in her lanyard, locker key and fob to school every day.

