



# Woodford County High School for Girls

## Bulletin

Issue No. 461

5th December 2023



Dear Parents / Carers

I wrote to you on the afternoon of Saturday 4 November 2023 to report that some disturbing and highly offensive graffiti, Islamophobic, racist and aggressive in nature, had been reported in one of the South End toilet cubicles. Four Year 13 students, independent of each other, drew our attention to it. This awful hate speech has caused considerable offence, hurt and anger within our community, particularly to our Muslim students, families and colleagues. Responding to this outrage has been a priority.

As you know from subsequent bulletin correspondence an investigation was immediately launched and the crime reported to the police, Prevent, the Chair of Governors, the Borough and the Local Authority Designated Officer (LADO). Assemblies were held immediately for all year groups (Monday 6 November). Students were urged to bring us any information which could prove relevant and given a range of ways of doing so, anonymously if necessary. I have to report that nothing further was reported or shared with us. It is unusual at Woodford for information not to be forthcoming and this strongly suggests that few, if any, students beyond the perpetrator know who committed this dreadful act.

I am writing now to report on the investigation undertaken this month.

In my letter of 4 November I drew attention to the fact that identifying the culprit(s) might be difficult. Washroom cubicles are designed to provide privacy. Direct evidence of the enacting of the graffiti on CCTV, for example, is ruled out by the location of the crime.

In exploring the matter the investigating officer sought accurately to determine the window of time in which this malicious act could have occurred, in order to reference the technologies available to us and to interview anyone who might have relevant information. On the basis of the testimony of reporting students the probable time slot was identified to be between 1.30 – 3.00pm on the Friday afternoon. This informed access to fob records (who'd fobbed in or out of the neighbouring door at that juncture), lateness and absence records and logs of students who'd asked briefly to be excused from the P5 lesson for comfort (or other) reasons. The above sources were triangulated to narrow down a list of students to approach. These students were spoken to as possible sources of information – as having potentially been in the right place to witness something out of the usual or to supply pieces of the jigsaw which together might build a useful picture. Handwriting was cross-referenced for the students identified (by themselves or by others)

as using the South End toilets at this time. No handwriting match was detectable, neither did a specific potential identifying factor identified by the police officer attending the crime scene prove fruitful.

In summary, based on the limited evidence available, it has proven impossible to establish who is responsible for the graffiti. The large number of students moving around that area at lunchtime, and especially using those toilets, means identifying every individual is impossible. The graffiti was left in a closed cubicle, so the perpetrator would not have been observed in the act. On balance, the investigator concluded it unlikely that any of the girls questioned were responsible for the graffiti. The suspicion is that the culprit is a different individual but short of them confessing it is impossible to know who this is. Indeed it may never be established.

An incident of this nature must be a prompt for institutional learning. Washrooms are being checked daily now for graffiti or for posters in order to rule out any form of racism or hate speech, against any community. Islamophobia Awareness Month has been the subject of assemblies and seminars with students throughout the school. MEND (Muslim Engagement & Development) led sessions with our Sixth Form students. We secured DfE funding a year ago for the Equaliteach Programme aimed to support school staff and students in stamping out bullying focusing on any of the protected characteristics, as listed in the 2010 Equalities Act. Fundraising for the Red Crescent / Red Cross mid-month raised £888.26.

In concluding I once again condemn the racist and Islamophobic action within our school community which has caused so much distress. Should we at any point succeed in identifying the culprit, we will respond accordingly. That level of closure at present seems unlikely. We will redouble the considerable work undertaken in the last decade to promote equality here at Woodford and further to develop an anti-racist culture. Importantly we will continue with the rich and inclusive programme of enrichment in school. Relationships between peers and between year groups are unusually strong in this school. That hasn't changed. Again, it's important we limit the impact of this appalling action by remembering it is not characteristic more broadly of the students with whom we work.

Yours sincerely,

Ms Jo Pomeroy

Headteacher



Save the Children  
**CHRISTMAS  
JUMPER DAY**



Thursday 7<sup>th</sup> December is  
WCHS Christmas Jumper Day!

**£2.00\*\***

Wear a **CHRISTMAS JUMPER\*** with your **non-uniform**  
and help to raise money for the Save the Children

\*Christmas Jumper OR Customise a jumper!



**CHRISTMAS  
JUMPER DAY**

\*\* Parent Pay is open! Please donate your £2.00 via  
parent pay

# CHRISTMAS CONCERT

Dear parents/guardians,

Just a reminder that if your daughter is performing in the Christmas Concert on December 14th, please fill out this [form](#), giving her permission to perform on the night. This applies even if you aren't able to come and watch.

Many thanks, Music Department



## REHEARSAL SCHEDULE FOR 14th DECEMBER

On Thursday 14th December, we will be rehearsing the below groups at the corresponding times for the Christmas concert in the evening at 7pm. **Please leave class early so that you arrive on time to start.** It is **your** responsibility to make sure you are ready to **start playing/singing** at the times stated.

All rehearsals will take place in **the main school hall**.

**IMPORTANT:** Sixth Formers must be in their formal uniform, i.e white shirt, black trousers/skirt and smart black shoes.

Period 1 (08:50-09:20)	Junior Band
Period 1 (09:20-09:50)	String Orchestra
Period 2 (09:55-10:25)	Junior Choir
Period 2 (10:25-10:55)	Senior Choir (Junior Choir to stay until 10:40)
Period 3 (Whole hour)	Orchestra
Period 4 (12:20-12:50)	Carnatic Ensemble
Period 4 (12:50-13:20)	Jazz Band
Period 5	<b>ALL</b> performers (including student groups not listed on schedule)



# BOULDERING CLUB JANUARY 2024

We have 2 places available in January's Bouldering club, I gave out consent forms, these need to be filled in and returned to Ms Dawson in the main office, then the activity is released on ParentPay.

We have a number of payments outstanding, these need to be made as soon as possible please, or the spaces will go back out.

If you are interested in doing the activity, please collect a form from Ms Dawson in the office, first come first served basis.

Thank you





**\*\*\* DONATIONS \*\*\***  
**\*\*\* NEEDED \*\*\***



Dear Parent / Carer

The Medical Room is seeking donations of new white socks / tights in various sizes to keep as spare items for students who may need to change due to reasons such as accidents, wet feet or falling over.

Please send your donations to Mrs Kaye in the Medical Room, where they will be stored for future use.

Thank you in advance.

Mrs Kaye

Health & Welfare Officer

## CHRISTMAS CONCERT RAFFLE

PFA would like to ask for donations of unwanted gifts for the prize hampers at the Christmas concert Raffle.

Your generosity is greatly appreciated.

Iffat Hayat

PFA Chair



# London Borough of Redbridge

## Broadmead Road: Update

Many WCHS Parents / Carers will be aware that a major section of Broadmead Road in Woodford was closed to traffic in July 2023 due to significant structural defects reported following an inspection of the bridge. As soon as the defects were discovered, the road was closed to prevent potential loss of life or serious injury.

Following the closure, the Council commissioned more detailed surveys to establish the extent of the structural issues. These surveys are ongoing. To re-open Broadmead Road will require extensive construction work and is expected to take a significant amount of time. The closure of the bridge meanwhile continues to have a significant ongoing impact on local road users, including bus passengers. The Council states on its website that essential repair to the bridge are expected to cost at least £25million.

The London Borough of Redbridge has written to the Government to seek urgent financial support to reopen this critical transport link. If you wish to add your voice to theirs, or to voice your opinions on the matter, use the link below.

[https://www.redbridge.gov.uk/have-your-say/broadmead-road-bridge/broadmead-road-bridge-petition/?fbclid=IwAR3xeGWGwUYDyF6PDM3yj7fykssjO\\_u0MdlqqSqPnQ0SqYRbZ1krFfDCY3E](https://www.redbridge.gov.uk/have-your-say/broadmead-road-bridge/broadmead-road-bridge-petition/?fbclid=IwAR3xeGWGwUYDyF6PDM3yj7fykssjO_u0MdlqqSqPnQ0SqYRbZ1krFfDCY3E)

Meanwhile, here at Woodford, we are grateful for the adjustments parents have made to their own schedules and those of their children to ensure the matter does not impact on punctuality to school.



Funded by



Department  
for Education

London Borough of

**Redbridge**



Holiday Activities and Food  
London Borough of Redbridge  
Gearies Children's Centre  
Waremead Road, Gants Hill,  
Ilford, Essex, IG2 6TF

November 2023

Dear Parent/Carer

**Winter Holiday FUN: Thursday 21<sup>st</sup> December – Wednesday 3<sup>rd</sup> January 2024**

Good News! We are offering your child a free programme of fun and food this Winter.

**Your invitation**

You are receiving this letter as your child is in a year group ranging from Reception to Year 11 and is eligible for benefits-related Free School Meals.

**Activities on offer**

We have a fun-filled programme across Redbridge, ranging from multi sports, arts and crafts, drama, cookery and much more! It is a great opportunity for your child to develop new skills and make new friends. Lunch is also provided at every session!

All activities are delivered by approved providers with a focus on physical fun, nutritional education and learning new skills. Providers also have experience with special educational needs and disabilities.

**How to Book**

To find out what's on offer please visit Redbridge HAF: <https://find.redbridge.gov.uk/haf>

Alternatively for quick and easy access to our HAF page on your device please scan the QR code below.



Kind regards

*Redbridge Holiday Activity and Food (HAF) Programme*





# Redbridge Winter Holiday Fun

From  
DEC to  
JAN



Creative Media



Arts & Crafts



Multi-sports

- ✓ Free food
- ✓ Free activities
- ✓ New friends
- ✓ New skills

Is your child in  
Reception to Year 11  
and in receipt of  
Benefit Related  
Free School Meals?

Enjoy **FREE** sports, arts & crafts,  
drama, cooking and MORE!

scan me



TO BOOK YOUR PLACE -

scan this QR code, visit:

<https://find.redbridge.gov.uk/haf>

or email: [haf@redbridge.gov.uk](mailto:haf@redbridge.gov.uk)

Funded by



Department  
for Education

# WCHS THEATRE SOCIETY

## HAMILTON

Tuesday 9<sup>TH</sup> January 7.30pm

Victoria Palace Theatre

**TICKETS AVAILABLE FOR £40.00**

### TICKETS NOW ON SALE FOR...

THE MOTIVE & THE CUE – Wednesday 10<sup>th</sup> January 2024 @ 7:30pm, Noel Coward Theatre **£30**

GUYS & DOLLS – Tuesday 6<sup>th</sup> February 2024 @ 7:30pm, Bridge Theatre **\*\*STANDING ONLY\*\* £27.50**

THE CURSED CHILD – Wednesday 6<sup>th</sup> March 2024 Part 1 @ 2pm, Part 2 @ 7pm, Palace Theatre **£50 (incl. both parts)**

THE LION KING – Tuesday 12<sup>th</sup> March 2024 @ 7:30pm, Lyceum Theatre **£35**

LONDON TIDE – Monday 15<sup>th</sup> April 2024 @ 7pm, National Theatre (Lyttelton) **£15**

THE LION KING – Tuesday 23<sup>RD</sup> April 2024 @ 7:30pm, Lyceum Theatre **£30**

THE WITNESS FOR THE PROSECUTION – Tuesday 30<sup>th</sup> April 2024 @ 7:30pm, London, County Hall **£27.50**

MAMMA MIA! – Wednesday 1<sup>st</sup> May 2024 @ 7:30pm, Novello Theatre **£30**

THE DEVIL WEARS PRADA – Wednesday 6<sup>th</sup> November 2024 @ 7:30pm, Dominion Theatre **£30**

The WCHS Theatre Society is a PFA initiative. An adult must accompany lower school students – this is not a school trip and is not supervised. For more information and to book tickets, email Ms Horn in the library.

**PAYMENT MADE VIA PARENTPAY. Search for PFA Theatre Society.**

[library@woodford.redbridge.sch.uk](mailto:library@woodford.redbridge.sch.uk)



# CANTEEN

Innovate IFG

## TARIFF SEPTEMBER 2023

DRINKS	PRICE	BREAKFAST	PRICE
Water 330ml	80p	Breakfast Roll	£2.05
Fruit Slush – Med/Lrg	90p/£1.45	Small Breakfast Baguette	£1.40
Capri Sun	£1.30	3 Piece Breakfast Pot	£2.00
Dalston Cans	£1.40	Toast with Butter or Jam	35p
Radnor 200ml Carton	£1.10	Pancake with Topping	£1.25
Milk / Flavoured Carton	£1.00	Waffle with Topping	£1.55
HOMEBAKES		Pastries & Croissants	£1.55
Muffins	£1.30	Cereals + Milk	90p
Mini Cakes	From 40p	Porridge for Staff	Free/ £1.05
Cookies	£1.15	Porridge for Students	Free
Chocolate / Cheese Straw	£1.15	Porridge Toppings	40p Each
HOT GRAB & GO		COLD GRAB & GO	
Ciabatta	£3.20	Roll	£1.00
Panini	£2.60	Sub	£2.05
Toastie	£2.15	Wrap	£2.60
Loaded Nachos	£2.25	Street Vibes & Naturally	From £2.85
Garlic Dough Balls	£1.40	Baguette	£2.65
Burrito	£2.65	Cold Pasta Pot – Med/Lrg	£1.00/£2.50
Chicken Wings	£2.15	Sml Self-Serve Salad Bar	£1.80
Shawarma	£2.65	Houmous Pot	£1.20
Pizza Slice	£1.50	Edamame Beans	£1.60
Street Vibes	£2.60	Sushi	£3.00
Naturally (V / Ve)	From £2.65	Yoghurt/Jelly/Fruit Pots	£1.00
Hot Pasta Pot – Med/Lrg	£2.15/£2.50	Whole Fruit	55p
Jacket Potato – 1 Topping	£2.05		

VAT on hot food and beverages will be charged at the current rate for all staff members

## WCHS - ECTT – Term 2

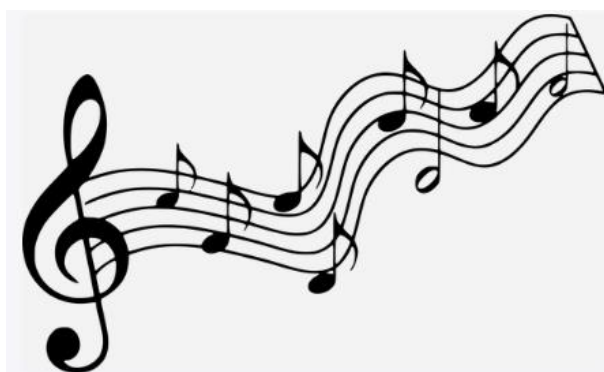
	<u>Mon</u>	<u>Tues</u>	<u>Weds</u>	<u>Thurs</u>	<u>Fri</u>
<u>Before School</u> <u>7.50-8.20am</u>					<b><u>Yr12&amp;13</u></b> <b><u>Badminton</u></b> STA
<u>Lunchtime</u> <u>1.30-2pm</u>	<b><u>Volleyball</u></b> <b><u>(all)</u></b> VJA  <b><u>Trampolin-</u></b> <b><u>ing</u></b> KRU Week A = yr9-11 Week B = yr7&8	<b><u>*Netball -</u></b> <b><u>SQUAD Train-</u></b> <b><u>ing Only*</u></b> + Sixth formers STA, VJA, HBA, KRU	<b><u>Football Train-</u></b> <b><u>ing</u></b> Week A = yr7 & 8 HBA Week B = yr9-11 STA  <b><u>Athletics</u></b> (all) KRI	<b><u>Badminton</u></b> VJA Week A = yr7&8 Week B = yr9-11	<b><u>Yr10 &amp; 11</u></b> <b><u>GCSE Tram-</u></b> <b><u>polining &amp;</u></b> <b><u>Badminton</u></b> STA & KRU  <b><u>Cross Coun-</u></b> <b><u>try</u></b> (all) KRI
<u>After-school</u> <u>3.30-4.20pm</u>			<b><u>*FIXTURES*</u></b>		





# Music Extra-Curricular Timetable: Winter 2023

	Monday	Tuesday	Wednesday	Thursday	Friday
<b>Lunchtime</b>	<b>Junior Choir</b> Ms Nina (SF1) 13:30- 14:10  <b>Senior choir</b> JMI (Main Hall) 13:40-14:15  <b>Brass Ensemble</b> (Jubilee room) 13:45-14:15  <b>Kalimba Club</b> (Conference room) 13:40-14:15	<b>Junior Band</b> IBO (SF1) 13:30- 14:10  <b>Flute ensemble</b> (please speak to Ms Hannent if interested) KHN 13:40-14:10  <b>Musical Theatre Club</b> (Conference Room) 13:40-14:10	<b>Jazz Band</b> KHN (SF1) 13:40-14:15  <b>String orchestra</b> IBO (SF2) 13:40-14:15  <b>Carnatic Ensemble</b> (Jubilee Room 1) 13:30-14:20  <b>Ukelele Club</b> (Jubilee Room 2) 13:40-14:15	<b>Theory and GCSE/A-level support</b> IBO (SF2) 13:40-14:15	<b>Orchestra</b> IBO (SF1) 13:40-14:15  <b>Guitar Ensemble</b> (SF2) 13:40-14:15
<b>After school</b>		<b>Chamber groups</b> IBO (SF1/2) 15:45-16:30			





# AUTUMN 2023 WEBINARS

Register with Mrs Horn, in the Library.

[hornd@woodford.redbridge.sch.uk](mailto:hornd@woodford.redbridge.sch.uk)

## DECEMBER 2023

5<sup>th</sup>, 3.45pm – 4.30pm: Law/Criminology – The Criminal Justice System with Aberystwyth Uni

6<sup>th</sup>, 1.30pm – 2.15pm: Photography – The Persuasive Power with Solent Uni

6<sup>th</sup>, 4pm – 4.45pm: MFL Theatre Society – Brecht's Epic Theatre with Aberystwyth Uni

7<sup>th</sup>, 4.30pm – 5.15pm: HE – How to Manage Money at Uni with UEA

**REGISTER WITH MRS HORN, IN THE LIBRARY** [hornd@woodford.redbridge.sch.uk](mailto:hornd@woodford.redbridge.sch.uk)







# LIVE FOR THE MOVEMENT

Sign up today for **FREE**  
weekly fitness classes

Calling all girls aged 11-16! Check  
out our new **MOVE TOGETHER**  
**FITNESS CLASSES.**

Good for both body and mind  
our specially designed classes  
will help you to build strength,  
confidence and get you moving.  
It's the perfect opportunity to  
have fun with friends.

**Find out more**

## **MOVE TOGETHER**

Join our next class at...

Time:

Date:

Location:

[nuffieldhealth.com/movetogether](https://nuffieldhealth.com/movetogether)



# Educational Psychology Service Parent Helpline

Would you like to talk to someone?

Do you need some support with creating a daily routine for your child?

Are you concerned about your child's emotional wellbeing?

Are you struggling to motivate your children at home or manage sibling relationships?

The Educational Psychology Service (EPS) are here to support you.

We have a **dedicated telephone helpline for parents/carers** where you will receive advice and guidance from a professional

Educational Psychologist.

The EPS helpline is available for all parents and carers - your child does not need to be known to the EPS, does not need to have a special educational need or additional support within school.

We welcome calls from all parents and carers.

## EPS Helpline

Telephone: 07741 331 009

Opening hours:

Every Wednesday 10am - 4pm

Webpage: <https://www.redbridge.gov.uk/schools/educational-psychology-service/>

FIND: [Educational Psychology Service](#)

@Redbridge\_aep Twitter account.





## Support for residents struggling with the cost of living



Please see the message below from The London Borough of Redbridge:

Please can you send the following links to families which will support them with the cost of living:

[Cost of Living \(redbridge.gov.uk\)](https://redbridge.gov.uk/cost-of-living)

[Cost of Living - Cost of Living payment \(redbridge.gov.uk\)](https://redbridge.gov.uk/cost-of-living-payment)

[Cost of Living - Foodbanks \(redbridge.gov.uk\)](https://redbridge.gov.uk/cost-of-living-foodbanks)

There is the [Ilford Community Grocery](https://communitygrocery.org.uk/ilford/) - we urge every family in need to join the Ilford Community Grocery, 25-29 Clements Rd where residents can buy food at 80% discount:

**For the longer term** you may be interested in buying your groceries at the Ilford Community Grocery. Join this grocery for £5 a year and you can buy 12 items for just £5. It is located at 25-29 Clements Rd, Ilford.

It is open Monday through Friday 9:30am - 4:30pm.

More details: <https://communitygrocery.org.uk/ilford/>



### PREGNANCY YOGA

MONDAY 7:30 - 8:30PM

DANCE STUDIO, WOODFORD COUNTY  
HIGH SCHOOL

BOOK YOUR SPOT: [YOUSEFIYOGA.COM](https://yousefiyoga.com)

# Make this Christmas the most memorable one yet



## Foster for Redbridge

020 8708 6068

[fostering@redbridge.gov.uk](mailto:fostering@redbridge.gov.uk)



Make this Christmas the most memorable yet. Change a Life. Foster for Redbridge.

325 Redbridge children need to spend time in foster care each year.

"I love watching the difference I can make to a child. I love watching them succeed in life and to know I have made a difference to their life".

Sarah, 50 and Kazim, 56—Foster Carers for Redbridge

"The thing I love most about fostering is seeing the progress children and young people make during the time they are with us. From surviving to thriving. I also wish I was told what fun fostering is and the sense of community you feel when meeting with other foster carers for support, friendship and advice. You really aren't on your own."

Tracy, 55 and Wayne, 54—Foster Carers for Redbridge

Like all of our Redbridge foster carers, you could quite literally change a child's life.

Please call 0208 708 6068 or email [fostering@redbridge.gov.uk](mailto:fostering@redbridge.gov.uk) for more information or visit <https://www.redbridge.gov.uk/fosteringschools> to book onto our next Virtual Information Session.

## DATES FOR THE DIARY

<b>AUTUMN 2023</b>		
Term	Wednesday 6 September 2023	Friday 20 October 2023
<b>WCHS Remote Schooling</b>	Friday 15 September 2023	Students studying from home
<b>Half-term</b>	Monday 23 October 2023	Friday 27 October 2023
Term	Monday 30 October 2023	Wednesday 20 December 2023
<b>Non-Contact Day</b>	Thursday 12 October 2023	

<b>SPRING 2024</b>		
Term	Thursday 4 January 2024	Friday 16 February 2024
<b>Half-term</b>	Monday 19 February 2024	Friday 23 February 2024
Term	Monday 26 February 2024	Thursday 28 March 2024
<b>Spring Break</b>	<b>Monday 1 April 2024</b>	<b>Friday 12 April 2024</b>
<b>Non-Contact Day</b>	<b>Wednesday 6 March 2024</b>	



## KEY DATES TO REMEMBER

**7 December—Christmas Jumper Day**  
**12 / 13 December—School Christmas Lunch**  
**14 December—Christmas Concert**  
**18 December—Year 13 (2020-2021) Certificate & Social Event**  
**20 December—End of Term**



### REMINDER

Please remind your daughter to bring in her lanyard, locker key and fob to school every day.

