

The Islamic Month of Ramadan

As you are probably aware, the Islamic month of Ramadan started on Sunday.

Eid al-Fitr will be either **Tuesday 9 April** or **Wednesday 10 April 2024**.

The fasts (dawn to sunset) are long and challenging, particularly during the school term. Fasts will be **around 14 hours** long without food or drink. This, we understand, will mean getting up very early to get a quick bite to eat for some of our students, so sleep patterns may be affected. We are aware that, as well as the “non-eating” side of things, family commitments and prayer are increased during this period. Of course, some members of staff will be fasting too.

Colleagues have been alerted to the general challenges our Muslim students (and their families) may be facing during this period and will be attentive to their welfare. If parents are aware of any specific issues regarding their daughter’s fast, they are asked to let us know.

Students are reminded that we have spaces set aside for lunchtime prayer. In the main building the Spirituality Space is on the top floor. In the Centenary Centre Lab 1 is available. **For the duration of Ramadan the Conference Room will serve as an additional prayer space.**

We wish our Muslim students and their families well as they mark the Holy Month of Ramadan.

Ms Jo Pomeroy
Headteacher

Medical Room during Ramadan

Whenever a student attends the medical room they will be asked about their symptoms and this will inform the medical room staff about how to proceed.

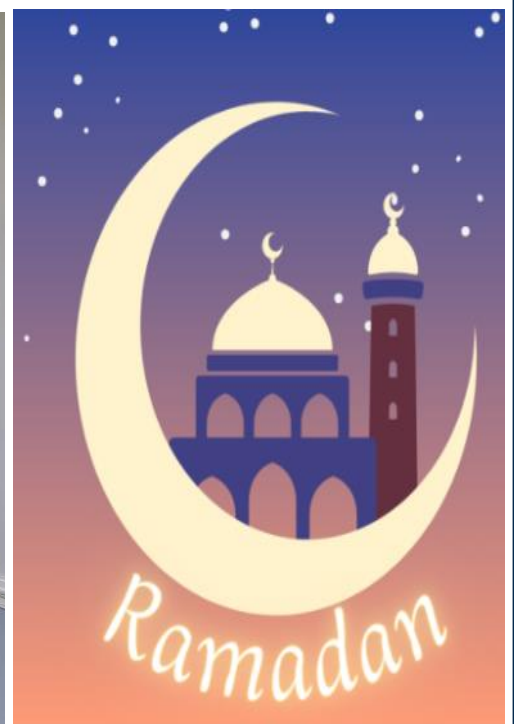
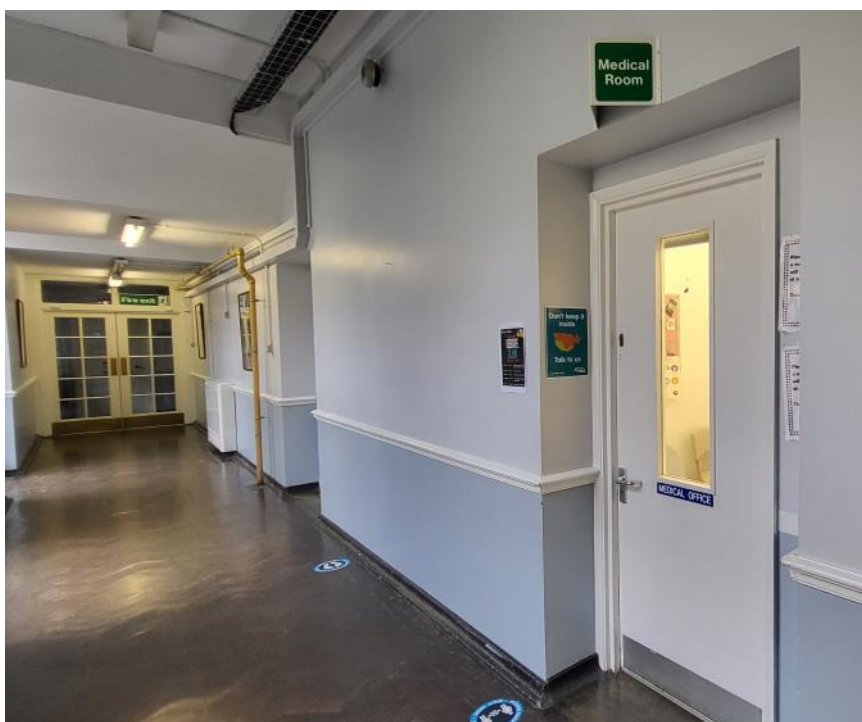
Please do not be concerned about attending the medical room if you are fasting. We will ask you about your symptoms as usual but you will not be required to break your fast. We will enquire if you are fasting so that we can take this into account, in deciding the best advice to give you. For example, we will first try treatments that will not break your fast i.e. if a headache a cold compress or heat pack, if feeling light headed, resting for a short while before returning to class.

If we are recommending a treatment that would involve breaking your fast, we would be sure to give the option of consulting with your parents first as many students prefer to do this.

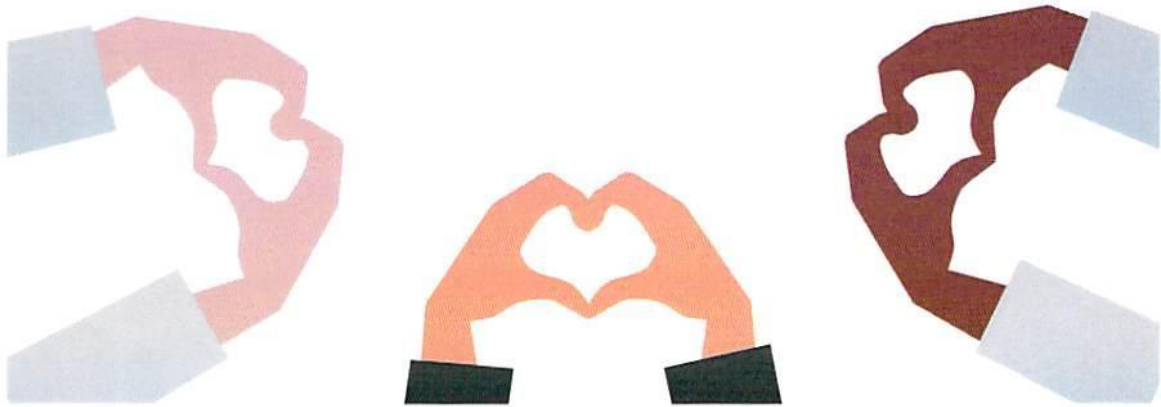
Illness can happen at any time so we wanted you to know that we recognise, respect and support the fact that students have different requirements according to their religious practices.

Regards

Mrs Kaye and Mrs Mann



Warner House



**Thank you for raising an
incredible £384.03 for Macmillan
Cancer Support during your
Charity Week!**

Together, we can do whatever it takes to help
people with cancer.

Thank you.



**MACMILLAN
CANCER SUPPORT**

Coding Club

Learn. Code. Fly!

Join Us



Coding * Robotics * Gaming

Every Wednesday
Lunch Time SG3
1:30 to 2:00

Organised By
Asmita Saha
Hiba Ather
Mr.Mian



GCSE Computer Science Revision Club

Join our Computer Science Revision Club, tailored specifically for GCSE year 11 students! Dive deep into the most challenging topics, enhance your understanding, and conquer your exams with confidence. Benefit from exclusive quizzes, comprehensive notes, and engaging PowerPoints, all crafted with care. Don't miss this opportunity to boost your grades and knowledge in a supportive and interactive environment. See you there!

Day, time and location: Every Thursday, During lunch in SG3

Run by: Ms. Paramesvaran (A* A-Level Student)

Supervised by: Head of Department



After School Clubs

New activity coming for April/May, keep an eye out for a booklet coming out to you on Groupcall.

Limited spaces and consent form to be filled in.



Ready? Aim ... Fire!

Brand new to after school clubs this half term, and double the fun.
Starting with soft archery and ending with tag archery.

Music Extra-Curricular Timetable: Spring 2024

	Monday	Tuesday	Wednesday	Thursday	Friday
Lunchtime	Junior Choir Ms Nina (SF1) 13:30- 14:10 Brass Ensemble (Jubilee room) 13:45-14:15 Kalimba Club (Conference room) 13:40-14:15	Junior Band IBO (SF1) 13:30- 14:10 Flute ensemble (please speak to Ms Hannent if interested) KHN 13:40-14:10 Musical Theatre Club (Conference Room) 13:40-14:10	Jazz Band KHN (SF1) 13:40-14:15 String orchestra IBO (SF2) 13:40-14:15 Carnatic Ensemble (Jubilee Room 1) 13:30-14:20	Theory and GCSE/A-level support IBO (SF2) 13:40-14:15 Ukulele Club (SF1) 13:40-14:15 Senior choir KHA (SF1) 13:40-14:15	Orchestra IBO (SF1) 13:40-14:15 Guitar Ensemble (SF2) 13:40-14:15
After school		Chamber groups IBO (SF1/2) 15:45-16:30			



WCHS - ECTT – Term 3

	<u>Mon</u>	<u>Tues</u>	<u>Weds</u>	<u>Thurs</u>	<u>Fri</u>
<u>7.50-8.20am</u>					<u>Yr12&13</u> <u>Badminton-</u> <u>STA</u>
<u>Lunchtime</u> <u>1.30-2pm</u>	<u>Volleyball</u> <u>(all)</u> VJA	<u>*Netball</u> <u>- SQUAD</u> <u>Training</u> <u>Only*</u> STA, VJA, HBA, KRU (Fatima)	<u>Football Training</u> Week A = yr7 & 8 HBA Week B = yr9-11 STA <u>Athletics</u> (all) KRI <u>Badminton</u> VJA Week A = yr7&8 (Lekhana) Week B = yr9-11 (Pranathi) <u>Table Tennis</u> KRU From 22/1/24 In the conference room	<u>Yr10 & 11 GCSE</u> <u>Trampolining &</u> <u>Badminton</u> STA & KRU <u>Netball for all</u> (Kosom/Sampriti/ Sara) <u>Cross Country</u> (all) KRI	<u>Prisons Club</u> (Saanvi)
<u>3.30-4.20pm</u>			<u>*FIXTURES*</u>		



Woodford County Eco Info

As a school community we all have the responsibility to create a sustainable future for our beautiful planet.

March 2024
sustainability and
environmental
awareness dates



Big Plastic Count – 11th to 17th March

Great British Spring clean – 15th to 31st March

Global Recycling Day – 18th March

International Day of Forests - 21st March

World Water Day – 22nd March

Earth Hour – 23rd March



THE BIG PLASTIC COUNT

11-17 MARCH

The WCHS Eco-Committee invite everyone at home to participate in positive change. Together, we can build even more evidence about what happens to our plastic waste to help put a stop to the plastic crisis.

In 2022, nearly 250,000 people from schools, households and communities across the country made The Big Plastic Count the biggest ever investigation into UK household plastic waste. It showed that nearly 100 billion pieces of plastic are thrown away in the UK each year, with hardly any of it recycled.

The rest is burned, sent abroad or ends up in landfill. We can't recycle our way out of the plastic waste crisis, so The Big Plastic Count is back – and this time we've got an even bigger target in our sights – The Global Plastics Treaty.

By joining thousands of people across the country and counting all the plastic you throw away for a week, you can gather the vital evidence we need to convince UK ministers, supermarkets and big brands to lead the way at the global talks that could finally phase out plastic production for good. Let's get counting to make the Global Plastics Treaty as big and bold as it can be.



The UK Government needs to push for a strong and ambitious Global Plastics Treaty. The treaty needs to include an end to plastic pollution, a phase-out of new plastic production, and ensure a just and inclusive transition to a low-carbon, zero-waste, reuse-based economy.

This isn't about rating anyone's recycling habits, and we wouldn't want anyone to feel embarrassed by how much plastic they use. We know that there are some plastic items which are essential for disabled people, or people with medical conditions, and so these won't be included in the count.

HOW TO TAKE PART

It's easy! From Monday morning until Sunday evening, **count as you throw!**

Simply mark every piece of plastic package as you throw it away on the

Let's Count Tally Sheet.

TOP TIPS

1. Put the **Let's Count Tally Sheet** up on your fridge, or near your bin or recycling.
2. Tell everyone you live with that you're going to be taking part and ask them to include their plastic waste in the count too.
3. Using the **Let's Count Tally Sheet**, record the different types of household plastic packaging waste you use for one week. This includes plastic going in your bin and plastic you put out for recycling.
4. Use the **Plastic ID Tool** to look up plastic items if you need to.
5. Remember to write down any piece of plastic packaging you use while out and about, then mark it on your tally sheet when you get back home.

WHAT NOT TO COUNT

- ⇒ **Don't** include: plasters, medication packaging, non-dairy milk/juice cartons, nappies, dog poo bags, plastic cutlery or period products.
- ⇒ We **don't** want to include plastic items that are used for medical or sanitary reasons, or by people with disabilities who rely on plastic items for independence.
- ⇒ Also, we are **not** counting coffee cups or Tetra Pak, the plasticised cardboard material that many juice/milk cartons are made of.
- ⇒ Check out the Plastic ID Tool online to familiarise yourself with the kinds of plastics we're counting up for this survey.

Once your household has completed the survey, please record their results online at home via our unique class link and student's name:

<https://thebigplasticcount.com/submit/8989/woodford-county-high-school>

Find out more about The Big Plastic Count here: thebigplasticcount.com.

We'd like to say a huge thank you for taking part in this important investigation!

Together, we can build even more evidence about what really happens to our plastic.

Best wishes,

WCHS Eco-Committee.



Careers Fair (Y10-Y13)

Date: 27/03/2024

Time: Period 3 – Period 5

Location: Main Hall

A fantastic opportunity for students to meet one-on-one with employers to discuss potential pathways & explore careers in a variety of fields.

Any questions, please email
summersh@woodford.redbridge.sch.uk

Careers notice for parents

Calling for parent volunteers!

On the 27th March from 11:00 until 3:30, students of year groups 10, 11, 12 & 13 will have the opportunity to participate in a careers fair to meet employers and talk about career paths.

We already have a variety of different careers and organisations confirmed attending but if you are interested in volunteering to talk to students one-on-one about your career path and exciting moments so far, please do get in touch!

If you are interested please email in at summersh@woodford.redbridge.sch.uk with details about the career/sector you could represent, or if you have any further questions.

Thank you

Miss Summers



WCHS THEATRE SOCIETY

The Play That Goes Wrong

Wednesday 20th March @ 7.30pm

Duchess Theatre

TICKETS AVAILABLE FOR £27.50

TICKETS NOW ON SALE FOR...

THE HILLS OF CALIFORNIA—Tues 30th April @7pm, Harold Pinter Theatre **£30**

THE WITNESS FOR THE PROSECUTION – Tuesday 30th April 2024 @ 7:30pm, London, County Hall **£27.50**

MAMMA MIA! – Wednesday 1st May @ 7:30pm, Novello Theatre **£30**

MRS DOUBTFIRE—Wednesday 22nd May @ 7.30pm, Shaftesbury Theatre **£30**

BACK TO THE FUTURE – Mon 10th June @ 7.30pm, Aldephi Theatre **£40**

STRANGER THINGS – Tues 9th July @ 7pm, Phoenix Theatre **£35**

KISS ME KATE—Wed 17th July @ 7.30pm, Barbican Theatre **£30**

SHREK THE MUSICAL – Thurs 25th July @ 2.30pm, Eventim Apollo **£55**

THE DEVIL WEARS PRADA – Wed 6th November @ 7:30pm, Dominion Theatre **£30**

The WCHS Theatre Society is a PFA initiative. An adult must accompany lower school students – this is not a school trip and is not supervised. For more information and to book tickets, email Ms Horn in the library.

PAYMENT MADE VIA PARENTPAY. Search for PFA Theatre Society.

library@woodford.redbridge.sch.uk

SPRING 2024 WEBINAR SCHEDULE

Register with Mrs Horn in the Library

TIMETABLED LESSONS TAKE PRIORITY OVER WEBINARS

hornd@Woodford.redbridge.sch.uk

MARCH 2024

12 th @ 10.15am-11.00am	English: Skills –Focus on Comparing Texts, Techniques & Approaches
13 th @ 11.10am-11.55am	Environmental Science: Clean Rivers & Coasts
13 th @ 2.10pm-3.00pm	Research Methods: Data Handling & Stats for NON-Mathematicians
13 th @ 3.35pm-4.20pm	Maths/CS:The Maths Behind AI
14 th @ 11.10am-11.55am	RS/Philosophy: Ethics & Religion – Life & Death
14 th @ 4.15pm-5.15pm	MFL: French Film Society – Entre Les Murs
18 th @ 1.30pm-2.15pm	Media: Morning TV Analysis (Language & Representation)
18 th @ 4.15pm-5.15pm	Physical Geography
19 th @ 12.45pm-1.30pm	Accounting/Business: Making Sense of Report & Accounts–FTSE100
20 th @ 11.10am-11.00am	English:A Streetcar Named Desire
21 st @ 2.00pm-2.50pm	Psychology:The Caregiver – Role & Impact
21 st @ 4.00pm-4.45pm	Pharmacology: Drug Development

Register with Mrs Horn in the Library -
hornd@woodford.redbridge.sch.uk

SAVE THE DATE— BATTLE OF THE BANDS 2024!

WHEN?

WEDNESDAY 10TH JULY
18:00-20:00

WHERE?

WCHS MAIN HALL

AUDITIONS

AT THE BEGINNING OF THE SUMMER TERM

ALL WELCOME

START FORMING
YOUR GROUPS
AND PLANNING
REHEARSALS!

MORE DETAILS
COMING SOON



- EXPERIENCE HANDS ON CONSERVATION ACTIVITIES ● TAKE PART IN INSPIRING WORKSHOPS ●
- LEARN TO LEAD YOUR OWN ENVIRONMENTAL PROJECT OR CAMPAIGN ●
- GAIN SKILLS & KNOWLEDGE ● ATTEND MOTIVATIONAL CAREER TALKS ● DISCOVER INCREDIBLE WILDLIFE ●
- VISIT THE BEACH ● GO HIKING ● STARGAZE ● MAKE FRIENDS FOR LIFE ● HAVE THE BEST SUMMER EVER ●



Join Action for Conservation's

SUMMER CAMPS 2024

Apply by 7th April 2024



- Who?** Young people aged 12-16 living in England & Wales
- What?** All-inclusive residential trips with the Action for Conservation team
- Where?** Peak District, Pembrokeshire Coast & South Downs National Parks
- When?** In July & August 2024
- Why?** Explore nature, learn new skills, build your environmental knowledge & make friends for life!



**ACTION
FOR CONSERVATION**

Registered charity in England and Wales No. 1157297

CONTACT: CAMPS@ACTIONFORCONSERVATION.ORG

APPLY ONLINE AT: WWW.ACTIONFORCONSERVATION.ORG/CAMP

Scan the qr code to find out more



Barracudas Holiday Camp

Barracudas holiday camp is opening at our school this Easter!

Barracudas is the UK's favourite school holiday provider for children aged 4½ to 14 years. With 80+ exciting activities including archery, arts and crafts, motorsports, sports, teambuilding and much more!

Ofsted registered, confidence building camps with high staff to child ratios, plus parents of the school receive an extra £20 off per child per week if they quote code HSCP24 at the time of booking.

Book now at www.barracudas.co.uk or call 01480 467 567.



BOOK NOW!

Trustpilot ★★★★★
Ofsted Good Provider
Ofsted Outstanding Provider

**SCHOOL HOLIDAY CHILDCARE
EXCLUSIVE PARENT DISCOUNT!**

**USE CODE:
HSCP24**

APPLY CODE FOR AN EXTRA:

- £20 off a week
- £4 off a day

*Not to be used in conjunction with other offers

Visit **barracudas.co.uk**
or call 01480 467 567

BARRACUDAS
Activity Day Camps

SCAN ME & LEARN MORE!

The poster features a collage of images showing children at camp, a smartphone displaying the Barracudas app, and a QR code. The background is a mix of green, yellow, and red.



LIVE FOR THE MOVEMENT

Sign up today for **FREE**
weekly fitness classes

Calling all girls aged 11-16! Check
out our new **MOVE TOGETHER**
FITNESS CLASSES.

Good for both body and mind
our specially designed classes
will help you to build strength,
confidence and get you moving.
It's the perfect opportunity to
have fun with friends.

Find out more

MOVE TOGETHER

Join our next class at...

Time:

Date:

Location:

nuffieldhealth.com/movetogether





DENNIS & DYER
LEARN - GET FIT - COMPETE
DENNISANDDYERBOXINGACADEMY.CO.UK

FREE FEMALE SELF-DEFENCE CLASSES!

Throughout February and March 2024, Dennis and Dyer are giving back to the local community and will be putting on a number of free self-defence classes for females.

We want to aid in the improvement of self-defence, confidence, and overall fitness!

Dates to book: February 4th 18th & March 3rd 17th at 11 am



Download the app and keep an eye out for the notifications. Free classes valid through February and March 2024.



ENGLAND BOXING AFFILIATED

@DENNISANDDYERBA
REECE-MENNIE.COM



Are you a girl aged 13-19?
Do you enjoy dancing?

These opportunities are for you!



Have your say! Girls in Dance survey



AWA DANCE is launching a Girls in Dance Festival in 2025, to support and celebrate girls who enjoy dancing. We want to hear your voice! Take 5 minutes to help us making this the best opportunity for girls in dance.

Girls in Dance Bootcamp (online)

Saturday 13th April 2024, 12-2pm

Join our FREE online Girls in Dance Bootcamp to meet role models from the dance world, discover exciting opportunities & take part in a k-pop class!



AWA DANCE

AWA DANCE is a charity dedicated to the leadership development of women and teenage girls, using the transformative power of dance as the tool to empower their voices

www.awadance.org



Educational Psychology Service Parent

Helpline

London Borough of

Redbridge



Would you like to talk to someone?

Do you need some support with creating a daily routine for your child?

Are you concerned about your child's emotional wellbeing?

Are you struggling to motivate your children at home or manage sibling relationships?

The Educational Psychology Service (EPS) are here to support you.

We have a **dedicated telephone helpline for parents/carers** where you will receive advice and guidance from a professional

Educational Psychologist.

The EPS helpline is available for all parents and carers - your child does not need to be known to the EPS, does not need to have a special educational need or additional support within school.

We welcome calls from all parents and carers.



EPS Helpline

Telephone: 07741 331 009

Opening hours: Every Wednesday 10am - 4pm

Webpage: <https://www.redbridge.gov.uk/schools/educational-psychology-service/>

FIND: [Educational Psychology Service](#)

@Redbridge_aep Twitter account.



Call to Action—Educational Psychology

Please click on the link to access the “Call To Action” video from the Redbridge Educational Wellbeing Team (REWT) and the Redbridge Mental Health Support Team (MHST), who work with students and staff here at Woodford. This video is specifically for parents and carers and is part of their “break the stigma” campaign.

[Click here to access video](#)



Support for residents struggling with the cost of living



Please see the message below from The London Borough of Redbridge:

Please can you send the following links to families which will support them with the cost of living:

[Cost of Living \(redbridge.gov.uk\)](https://redbridge.gov.uk/cost-of-living)

[Cost of Living - Cost of Living payment \(redbridge.gov.uk\)](https://redbridge.gov.uk/cost-of-living-payment)

[Cost of Living - Foodbanks \(redbridge.gov.uk\)](https://redbridge.gov.uk/cost-of-living-foodbanks)

There is the [Ilford Community Grocery](https://communitygrocery.org.uk/ilford/) - we urge every family in need to join the Ilford Community Grocery, 25-29 Clements Rd where residents can buy food at 80% discount:

For the longer term you may be interested in buying your groceries at the Ilford Community Grocery. Join this grocery for £5 a year and you can buy 12 items for just £5. It is located at 25-29 Clements Rd, Ilford.

It is open Monday through Friday 9:30am - 4:30pm.

More details: <https://communitygrocery.org.uk/ilford/>



PREGNANCY YOGA

MONDAY 7:30 - 8:30PM

DANCE STUDIO, WOODFORD COUNTY
HIGH SCHOOL

BOOK YOUR SPOT: [YOUSEFIYOGA.COM](https://yousefiyoga.com)



London Borough of
Redbridge



Are you looking after a child who is not your own?

- Is the child under 16 (or 18 if they have a disability)?
- Are you NOT the child's step parent, sibling, aunt, uncle or grandparent? This also includes host families to overseas students
- Do you plan to have the child with you for more than 28 days?
- This is called "private fostering" and we must be **LEGALLY** notified to ensure the child is safe.

Please contact Redbridge Children's Services:

020 8708 3885

CPAT.Referrals@redbridge.gov.uk

or visit: www.redbridge.gov.uk/private-fostering for more information

Aveți în grijă un copil care nu este al dvs.?

- Copilul are mai puțin de 16 ani (sau 18 ani dacă are un handicap)?
- NU sunteți părintele vitreg, fratele/sora, mătușă, unchiul sau bunicul/bunica copilului? Sunt incluse și familiile gazdă ale studenților din străinătate
- Intenționați să găzduiți copilul la dvs. mai mult de 28 de zile?
- Acest lucru se numește „private fostering” (plasament privat) și trebuie să fim anunțați **LEGAL** pentru a ne asigura de siguranța copilului.

Vă rugăm să contactați Redbridge Children's Services (Serviciile pentru copii din Redbridge):

020 8708 3885

CPAT.Referrals@redbridge.gov.uk

sau vizitați: www.redbridge.gov.uk/private-fostering pentru mai multe informații

آپانی کی آپنار نیجہر نمان۔من کونو شیشور دکھاہونا کرکھن?

- شیشو کی 16 বছرہر کم بھسی (اٹھوا تار کونو اٹھماتا থাকلے, سیکھتے 18)?
- آپانی کی سبھانہر سہ پیتا/ماتا, ڈھیبوان, خالا, چاچا یا دانا-دانی نمان? امر مڈھو بیدہشی اٹھادہر جنیا ہوسٹ پاریبارو اٹھتھوٹ
- آپانی کی شیشو کی 28 دینہر ہیشی سامہر جنیا آپنار ساٹھ راخار پاریکھنا کرکھن?
- اٹھیکہ "پرائیویٹ فاسٹارینگ" یا "بھیکھت لالان-پالان" بولا ہمان اہم شیشو کی نیراپاد کینا یا نیشیت کرکھت آمادہر اہمٹھو آہن-گتھابہر اہمٹھو کرکھت اٹھتھو۔

انٹھوہ کرکھ ریکھڈریج چیلڈرنس سارٹیسہر ساٹھ ہوپاہوپا کرکھن اہی نمانہر:

020 8708 3885

CPAT.Referrals@redbridge.gov.uk

اٹھوا آارو تھوہر جنیا اٹھانہ مان: www.redbridge.gov.uk/private-fostering

کیا آپ ایسے بچے کی دیکھ بھال کر رہے ہیں جو آپ کا اپنا نہیں ہے؟

- کیا بچہ 16 سال (یا اگر وہ معذوری کا شکار ہے تو 18 سال) سے کم عمر ہے؟
- کیا آپ بچے کے سوتیلے والد/والدہ، بہن/بھائی، اٹھی، انکل یا دادا/دادی نہیں ہیں؟ اس میں غیر ملکی طلباء کے میزبان خاندان بھی شامل ہیں
- کیا آپ کا 28 دن سے زیادہ بچے کو اپنے پاس رکھنے کا ارادہ ہے؟
- اسے "نجی رضاعت" کہتے ہیں اور بچے کے محفوظ ہونے کو یقینی بنانے کے لیے ہمیں اس کی اطلاع دینا لازم ہے۔

براہ کرم ریڈ بریج سروسز برائے اطفال سے رابطہ کریں

020 8708 3885

CPAT.Referrals@redbridge.gov.uk

یا مزید معلومات کے لیے: www.redbridge.gov.uk/private-fostering

ملاحظہ کریں

کیہ نسیں کسے ایہو جے بچے نوں ساتیہ رہے او جیہڑا تہاڈا اپنا بچہ نہیں اے؟

- کیہ بچے دی عمر 16 ورھیاں نوں گھٹ اے (یاں 18 ورھے جے اوہناں نوں کوئی معذوری اے)؟
- کیہ نسیں بچے دے مٹرے مایے، بھین، بھرا، چاچا، چچی، ماما، مامی، تایا تائی یاں دادا دادی، نانا نانی نہیں او؟ ایہدے وچ بابرے ملکوں آئے پڑھیاراں دے میزبان ٹیر وی شامل نیں
- کیہ تہاڈا بچے نوں 28 دیہاڑیاں توں ودھ وپے لئی آئے کول رکھن دا ارادہ اے؟
- ایہتوں "نجی پرورش" اکھدے نیں تے سائوں قانونی طور تے اطلاع دینا لوڑی دا اے تاں کے پک ہو جاوے بٹی بچہ محفوظ اے۔

پور جانکاری لئی مہربانی کر کے Redbridge Children's Services نال رابطہ کرو:

020 8708 3885

CPAT.Referrals@redbridge.gov.uk

یاں www.redbridge.gov.uk/private-fostering وزٹ کرو۔

DATES FOR THE DIARY

SPRING 2024		
Term	Thursday 4 January 2024	Friday 16 February 2024
Half-term	Monday 19 February 2024	Friday 23 February 2024
Term	Monday 26 February 2024	Thursday 28 March 2024
Spring Break	Monday 1 April 2024	Friday 12 April 2024
Non-Contact Day	Wednesday 6 March 2024	

SPRING 2024		
Term	Monday 15 April 2024	Friday 24 May 2024
Half-term	Monday 27 May 2024	Friday 31 May 2024
Term	Monday 3 June 2024	Tuesday 23 July 2024
Non-Contact Day	Thursday 27 June 2024	

KEY DATES TO REMEMBER



21 March—Spring Concert
27 March—Career Fair
29 March—Bank Holiday
18 April—Year 8 Parents' Evening
30 April—Repton House Charity Week Begins
1 May—Year 10 Parents' Evening
9 May—Year 5 Virtual Open Evening
26 June—Year 11 Prom
27 June—INSET Day
3 July—Summer Showcase



REMINDER

Please remind your daughter to bring in her lanyard, locker key and fob to school every day.

