

Annual Fundraiser for Haven House Children's Hospice: A Non-uniform Day on Friday 26 April 2024

The first annual duty of a newly appointed Silver Badge (Senior Prefect) Team is to organise our annual fundraiser for Haven House. The 2024 team have been busy. Please see the poster below.

In a change to recent practice we are asking students to bring their £2 donation **in cash** on the day for the purpose. (This instead of collecting contributions via *ParentPay*.) Prefects will be collecting each form group's contributions in the morning registration period on the day.

Our annual donation to the Hospice, made each year on the School Birthday in September, is very important to us. Parental support in reminding students to bring their £2 contribution for participation in the non-uniform day on Friday 26 April will be very much appreciated. Thank you.

Ms Pomeroy
Headteacher



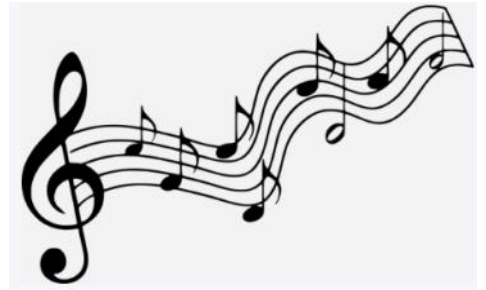
ALI BABA AND THE FORTY THIEVES

A CLASSIC PERSIAN STORY OF ALI BABA, WHO ONE DAY DISCOVERS A SECRET THAT LEADS HIM AND HIS FAMILY INTO TROUBLE. BUT WHO HOLDS THIS SECRET? THE FORTY THIEVES OF COURSE, AND THEY WILL DO EVERYTHING THEY CAN TO REGAIN WHAT ONCE WAS SOLELY THEIRS...

**AUDITION FOR THIS YEARS SUMMER PLAY!
BOTH SINGING AND NON-SINGING ROLES
AVAILABLE**

PLEASE COMPLETE THE SIGN-UP SHEETS IF INTERESTED BY MONDAY
18TH MARCH AT 3:30 PM

Music Department



Thank you to those students who have signed up to participate in the chorus and the orchestra for Ali Baba, this year's summer play. The rehearsal schedule has now been decided for each group, and rehearsals will start W/B 22/04:

Chorus: Tuesday lunchtimes, 13:30-14:10 in SF2

Orchestra: Friday lunchtimes, 13:40-14:15 in SF1

We are pleased to announce that we will be having a new peripatetic Music teacher joining us. She is a specialist in Carnatic styles of violin playing and singing and can offer our students tuition. We are yet to finalise the timings of lessons, but please make a note of this if you are interested and more details will be available soon!

AFTER SCHOOL CLUBS

April/May 2024

Dear parents, we have a few spaces left in April's after school clubs starting next week, these are available on ParentPay now.

- ♣ Macramé.
- ♣ Knitting.
- ♣ Monday intermediate cooking.
- ♣ Pop workshop.



Unfortunately I have had to cancel a taste of India, as there was a low uptake.

Thank you.

Ms Dawson

Woodford County Eco Info

As a school community we all have the responsibility to create a sustainable future for our beautiful planet.

April 2024
sustainability and
environmental
awareness dates



Fashion Revolution week – 15th to 24th April

Earth Day – 22nd April

Stop Food Waste Day – 24th April

World Penguin Day – 25th April

<https://moralfibres.co.uk/environmental-days-and-dates-to-know/>

GCSE Computer Science Revision Club

Join our Computer Science Revision Club, tailored specifically for GCSE year 11 students! Dive deep into the most challenging topics, enhance your understanding, and conquer your exams with confidence. Benefit from exclusive quizzes, comprehensive notes, and engaging PowerPoints, all crafted with care. Don't miss this opportunity to boost your grades and knowledge in a supportive and interactive environment. See you there!

Day, time and location: Every Thursday, During lunch in SG3

Run by: Ms. Paramesvaran (A* A-Level Student)

Supervised by: Head of Department



Coding Club

Learn. Code. Fly!

Join Us

Coding * Robotics * Gaming

Every Wednesday
Lunch Time SG3
1:30 to 2:00

Organised By
Asmita Saha
Hiba Ather
Mr.Mian



Music Extra-Curricular Timetable: Summer 2024

	Monday	Tuesday	Wednesday	Thursday	Friday
Lunchtime	Junior Choir Ms Nina (SF1) 13:30- 14:10 Brass Ensemble (Jubilee room) 13:45-14:15 Kalimba Club (Conference room) 13:40-14:15	Junior Band IBO (SF1) 13:30- 14:10 Flute ensemble (please speak to Ms Hannent if interested) KHN 13:40-14:10 Musical Theatre Club (Conference Room) 13:40-14:10	Jazz Band KHN (SF1) 13:40-14:15 String orchestra IBO (SF2) 13:40-14:15 Carnatic Ensemble (Jubilee Room 1) 13:30-14:20	Theory and GCSE/A-level support IBO (SF2) 13:40-14:15 Ukulele Club (SF1) 13:40-14:15 Senior choir KHA (SF1) 13:40-14:15	Orchestra IBO (SF1) 13:40-14:15 Guitar Ensemble (SF2) 13:40-14:15
After school		Chamber groups IBO (SF1/2) 15:45-16:30			



WCHS - ECTT – Term 4

	<u>Mon</u>	<u>Tues</u>	<u>Weds</u>	<u>Thurs</u>	<u>Fri</u>
<u>7.50-8.20am</u>					<u>Yr12&13</u> <u>Badminton-</u> <u>STA</u>
<u>Lunchtime</u> <u>1.30-2pm</u>	<u>Volleyball</u> <u>(all)</u> VJA	<u>*Netball</u> <u>- SQUAD</u> <u>Training</u> <u>Only*</u> STA, VJA, HBA, KRU (Fatima)	<u>Football Training</u> Week A = yr7 & 8 HBA Week B = yr9-11 STA <u>Athletics</u> (all) KRI <u>Badminton</u> VJA Week A = yr7&8 (Lekhana) Week B = yr9-11 (Pranathi) <u>Table Tennis</u> KRU From 22/1/24 In the conference room	<u>Yr10 & 11 GCSE</u> <u>Trampolining &</u> <u>Badminton</u> STA & KRU <u>Netball for all</u> (Kosom/Sampriti/ Sara) <u>Cross Country</u> (all) KRI	<u>Prisons Club</u> (Saanvi)
<u>3.30-4.20pm</u>			<u>*FIXTURES*</u>		



WCHS THEATRE SOCIETY

Witness for the Prosecution

Tuesday 30th April @ 7.30pm

London County Hall

TICKETS AVAILABLE FOR £27.50

TICKETS NOW ON SALE FOR...

THE HILLS OF CALIFORNIA—Tues 30th April @7pm, Harold Pinter Theatre **£30**

MAMMA MIA! – Wednesday 1st May @ 7:30pm, Novello Theatre **£30**

MRS DOUBTFIRE—Wednesday 22nd May @ 7.30pm, Shaftesbury Theatre **£30**

BACK TO THE FUTURE – Mon 10th June @ 7.30pm, Aldephi Theatre **£40**

STRANGER THINGS – Tues 9th July @ 7pm, Phoenix Theatre **£35**

KISS ME KATE— Monday 15th July @ 7.30pm, Barbican Theatre **£30**

SHREK THE MUSICAL – Thurs 25th July @ 2.30pm, Eventim Apollo **£55**

THE DEVIL WEARS PRADA – Wed 6th November @ 7:30pm, Dominion Theatre **£30**

The WCHS Theatre Society is a PFA initiative. An adult must accompany lower school students – this is not a school trip and is not supervised. For more information and to book tickets, email Ms Horn in the library.

PAYMENT MADE VIA PARENTPAY. Search for PFA Theatre Society.

library@woodford.redbridge.sch.uk

SAVE THE DATE— BATTLE OF THE BANDS 2024!

WHEN?

**TUESDAY 16TH JULY
18:00-20:00**

WHERE?

WCHS MAIN HALL

AUDITIONS

AT THE BEGINNING OF THE SUMMER TERM

ALL WELCOME

**START FORMING
YOUR GROUPS
AND PLANNING
REHEARSALS!**

**MORE DETAILS
COMING SOON**



Sign-up sheets for Battle of the Bands are also up in the Music department.

All students are welcome, and auditions will take place in the first week back in school after the Easter break .



LIVE FOR THE MOVEMENT



Sign up today for **FREE**
weekly fitness classes

Calling all girls aged 11-16! Check
out our new **MOVE TOGETHER**
FITNESS CLASSES.

Good for both body and mind
our specially designed classes
will help you to build strength,
confidence and get you moving.
It's the perfect opportunity to
have fun with friends.

Find out more

MOVE TOGETHER

Join our next class at...

Time:

Date:

Location:

nuffieldhealth.com/movetogether



SIGN UP



GIRLS RUGBY

JOIN US!

TASTER SESSION
24TH APRIL 6:30-8PM

**EMPOWERING
BUILDING SELF-ESTEEM
NEW FRIENDS AND
SUPPORT NETWORK
LONG LIFE LESSONS**

SIGN UP: <https://forms.gle/KYhpqc2RucdlScG17>

**NO PREVIOUS EXPERIENCE NEEDED
OPEN TO YEAR 7 to 11 GIRLS**

**HERE TO MAKE MEMORIES, HAVE FUN
AND TRAIN THE NEXT GENERATION
OF RUGBY PLAYERS!**

ETON MANOR RFC
THE NEW WILDERNESS
NUTTER LN, LONDON E11 2JA



Educational Psychology Service Parent

Helpline

London Borough of

Redbridge



Would you like to talk to someone?

Do you need some support with creating a daily routine for your child?

Are you concerned about your child's emotional wellbeing?

Are you struggling to motivate your children at home or manage sibling relationships?

The Educational Psychology Service (EPS) are here to support you.

We have a **dedicated telephone helpline for parents/carers** where you will receive advice and guidance from a professional

Educational Psychologist.

The EPS helpline is available for all parents and carers - your child does not need to be known to the EPS, does not need to have a special educational need or additional support within school.

We welcome calls from all parents and carers.



EPS Helpline

Telephone: 07741 331 009

Opening hours: Every Wednesday 10am - 4pm

Webpage: <https://www.redbridge.gov.uk/schools/educational-psychology-service/>

FIND: [Educational Psychology Service](#)

@Redbridge_aep Twitter account.



Call to Action—Educational Psychology

Please click on the link to access the “Call To Action” video from the Redbridge Educational Wellbeing Team (REWT) and the Redbridge Mental Health Support Team (MHST), who work with students and staff here at Woodford. This video is specifically for parents and carers and is part of their “break the stigma” campaign.

[Click here to access video](#)



Support for residents struggling with the cost of living



Please see the message below from The London Borough of Redbridge:

Please can you send the following links to families which will support them with the cost of living:

[Cost of Living \(redbridge.gov.uk\)](https://redbridge.gov.uk/cost-of-living)

[Cost of Living - Cost of Living payment \(redbridge.gov.uk\)](https://redbridge.gov.uk/cost-of-living-payment)

[Cost of Living - Foodbanks \(redbridge.gov.uk\)](https://redbridge.gov.uk/cost-of-living-foodbanks)

There is the [Ilford Community Grocery](https://communitygrocery.org.uk/ilford/) - we urge every family in need to join the Ilford Community Grocery, 25-29 Clements Rd where residents can buy food at 80% discount:

For the longer term you may be interested in buying your groceries at the Ilford Community Grocery. Join this grocery for £5 a year and you can buy 12 items for just £5. It is located at 25-29 Clements Rd, Ilford.

It is open Monday through Friday 9:30am - 4:30pm.

More details: <https://communitygrocery.org.uk/ilford/>



PREGNANCY YOGA

MONDAY 7:30 - 8:30PM

DANCE STUDIO, WOODFORD COUNTY
HIGH SCHOOL

BOOK YOUR SPOT: [YOUSEFIYOGA.COM](https://yousefiyoga.com)



London Borough of
Redbridge



Are you looking after a child who is not your own?

- Is the child under 16 (or 18 if they have a disability)?
- Are you NOT the child's step parent, sibling, aunt, uncle or grandparent? This also includes host families to overseas students
- Do you plan to have the child with you for more than 28 days?
- This is called "private fostering" and we must be LEGALLY notified to ensure the child is safe.

**Please contact Redbridge Children's Services:
020 8708 3885**

CPAT.Referrals@redbridge.gov.uk

or visit: www.redbridge.gov.uk/private-fostering for more information

Aveți în grijă un copil care nu este al dvs.?

- Copilul are mai puțin de 16 ani (sau 18 ani dacă are un handicap)?
- NU sunteți părintele vitreg, fratele/sora, mătușa, unchiul sau bunicul/bunica copilului? Sunt incluse și familiile gazdă ale studenților din străinătate
- Intenționați să găzduiți copilul la dvs. mai mult de 28 de zile?
- Acest lucru se numește „private fostering” (plasament privat) și trebuie să fim anunțați LEGAL pentru a ne asigura de siguranța copilului.

Vă rugăm să contactați Redbridge Children's Services (Serviciile pentru copii din Redbridge):

020 8708 3885

CPAT.Referrals@redbridge.gov.uk

sau vizitați: www.redbridge.gov.uk/private-fostering pentru mai multe informații

آپانی کی آپنار نیجہر نمان۔من کونو شیشور دکھاہونا کرکھن?

- شیشو کی 16 বছرہر کم بھسی (اٹھا تار کونو اٹھماتا تھاکلے، سیکھتے 18)?
- آپانی کی سبھانہر سہ پیتا/ماتا، ڈیہوان، خالا، چاچا یا دانا-دانی نمان? امر مڈھو بیدہشی اٹھدہر جنیا ہوسٹ پریبارو اٹھتھو
- آپانی کی شیشو کی 28 دینہر بھشی سامیہر جنیا آپنار ساٹھ راکھار پریکھنا کرکھن?
- اٹھیکہ "پرائیویٹ فاسٹیرنگ" یا "بھکشیگت لالان-پالان" بھلا ہمان اہم شیشو کی نیراپاد کینا یا نیشیت کرکھتے آمادہر اہمبھائی آہینگتھابہ اہمبھیت کرکھتے اٹھتھو

انہو گھ کرکھ ریدبرج چیلڈرن س سارٹیسہر ساٹھ ہوپاہوپا کرکھن اہی نمبر:

020 8708 3885

CPAT.Referrals@redbridge.gov.uk

اٹھا تار اٹھو تھوہر جنیا اٹھانے مان: www.redbridge.gov.uk/private-fostering

کیا آپ ایسے بچے کی دیکھ بھال کر رہے ہیں جو آپ کا اپنا نہیں ہے؟

- کیا بچہ 16 سال (یا اگر وہ معذوری کا شکار ہے تو 18 سال) سے کم عمر ہے؟
- کیا آپ بچے کے سوتیلے والد/والدہ، بہن/بھائی، اٹھی، انکل یا دادا/دادی نہیں ہیں؟ اس میں غیر ملکی طلباء کے میزبان خاندان بھی شامل ہیں
- کیا آپ کا 28 دن سے زیادہ بچے کو اپنے پاس رکھنے کا ارادہ ہے؟
- اسے "نجی رضاعت" کہتے ہیں اور بچے کے محفوظ ہونے کو یقینی بنانے کے لیے ہمیں اس کی اطلاع دینا لازم ہے۔

براہ کرم ریڈ برج سروسز برائے اطفال سے رابطہ کریں

020 8708 3885

CPAT.Referrals@redbridge.gov.uk

یا مزید معلومات کے لیے: www.redbridge.gov.uk/private-fostering

ملاحظہ کریں

کیہ نسیں کسے ایہو جے بچے نوں ساتیہ رہے او جیہڑا تھڈا اپنا بچہ نہیں اے؟

- کیہ بچے دی عمر 16 ورہیاں نوں گھٹ اے (یاں 18 ورہے جے اوہناں نوں کوئی معذوری اے)؟
- کیہ نسیں بچے دے مٹرے مایے، بھین، بھرا، چاچا، چچی، ماما، مامی، تایا تائی یاں دادا دادی، نانا نانی نہیں او؟ ایہدے وچ بابرے ملکوں آئے پڑھیاراں دے میزبان ٹیر وی شامل نیں
- کیہ تھڈا بچے نوں 28 دیہڑیاں توں ودھ وپے لئی آئے کول رکھن دا ارادہ اے؟
- ایہتوں "نجی پرورش" اکھدے نیں تے سائوں قانونی طور تے اطلاع دینا لوڑی دا اے تاں کے پک ہو جاوے بٹی بچہ محفوظ اے۔

پور جانکاری لئی مہربانی کر کے Redbridge Children's Services نال رابطہ کرو:

020 8708 3885

CPAT.Referrals@redbridge.gov.uk

یاں www.redbridge.gov.uk/private-fostering وزٹ کرو۔

DATES FOR THE DIARY

SUMMER 2024		
Term	Monday 15 April 2024	Friday 24 May 2024
Half-term	Monday 27 May 2024	Friday 31 May 2024
Term	Monday 3 June 2024	Tuesday 23 July 2024
Non-Contact Day	Thursday 27 June 2024	

AUTUMN 2024		
Non-Contact Day	Monday 2 September 2024	
Non-Contact Day	Tuesday 3 September 2024	
Term	Wednesday 4 September 2024	Friday 25 October 2024
Half-term	Monday 28 October 2024	Friday 1 November 2024
Term	Monday 4 November 2024	Friday 20 December 2024
Non-Contact Day	Thursday 10 October 2024	

KEY DATES TO REMEMBER



16 April—Sixth Form Offer Holding Day
 18 April—Year 8 Parents' Evening
 26th April—Non Uniform Day
 30 April—Repton House Charity Week Begins
 1 May—Year 10 Parents' Evening
 9 May—Year 5 Virtual Open Evening
 26 June—Year 11 Prom
 27 June—INSET Day
 3 July—Summer Showcase
 11 July—School Play
 16 July—Battle of the Bands



REMINDER

Please remind your daughter to bring in her lanyard, locker key and fob to school every day.

